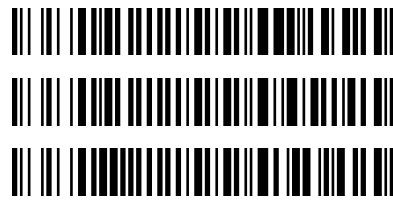



CS

10/7/2015

Worklist: 862

<u>LAB_CASE</u>	<u>ITEM</u>	<u>TASK_ID</u>	<u>DESCRIPTION</u>
M2015-2581	1	43100	6.1.1 Blood LCMS-QQQ Benzo
M2015-2646	1	43102	6.1.1 Blood LCMS-QQQ Benzo
P2015-1570	1	43103	6.1.1 Blood LCMS-QQQ Benzo



Reviewed by DND on 11/04/2015 

Worklist Report

Worklist Path:	C:\MassHunter\ISP Methods\worklists\CS-BZZZQ-B-LOWCAL10062015.wkl
Date Modified:	10/06/2015 02:12:39 PM
Date Printed:	10/07/2015 11:08:33 AM

Worklist Run Parameters

Operator Name:	62340
Run Type:	Standard Start
Part of Method to Run:	Acquisition Only
Execution for Acquisition-DA:	Synchronous
Acquisition Method Path:	C:\MassHunter\ISP Methods\Acquisition\Benzos_Z_Drugs_ACN_FA_ISP.m
DA Method Path:	D:\MassHunter\methods
Data File Path:	C:\MassHunter\Data\BZ\BZ-B-10062015
Pre-Worklist Script:	---
Post-Worklist Script:	SCP_InstrumentStandby(){MH_Acq_Scripts.exe}
Acquisition Clean Up Script:	SCP_InstrumentStandby(){MH_Acq_Scripts.exe}
Overlapped Injection:	No
Clear sample selection after run:	Yes
Wait Time for Ready(Min):	10
Threshold Disk Value(GB):	10
Comment:	---

Plate Barcode Information

Plate	Barcode
P1	

Worklist Table

Sample Position	Sample Name	Method	Data File	Sample Type	Level Name	Comment	Info.
P1-A1	Blank	C:\MassHunter\ISP Methods\Acquisition\Benzos_Z_Drugs_ACN_FA_ISP.m	Blank1-r001.d	Blank		AM 6.1.1 Benzo and Z by LCQQQ	
P1-A1	Blank	C:\MassHunter\ISP Methods\Acquisition\Benzos_Z_Drugs_ACN_FA_ISP.m	Blank2-r001.d	Blank		AM 6.1.1 Benzo and Z by LCQQQ	
P1-A2	5 ngmL	C:\MassHunter\ISP Methods\Acquisition\Benzos_Z_Drugs_ACN_FA_ISP.m	5 ngmL-r001.d	Calibration	1	AM 6.1.1 Benzo and Z by LCQQQ	
P1-A3	10 ngmL	C:\MassHunter\ISP Methods\Acquisition\Benzos_Z_Drugs_ACN_FA_ISP.m	10 ngmL-r001.d	Calibration	2	AM 6.1.1 Benzo and Z by LCQQQ	
P1-A4	25 ngmL	C:\MassHunter\ISP Methods\Acquisition\Benzos_Z_Drugs_ACN_FA_ISP.m	25 ngmL_r001.d	Calibration	3	AM 6.1.1 Benzo and Z by LCQQQ	
P1-A5	50 ngmL	C:\MassHunter\ISP Methods\Acquisition\Benzos_Z_Drugs_ACN_FA_ISP.m	50 ngmL_r001.d	Calibration	4	AM 6.1.1 Benzo and Z by LCQQQ	
P1-A6	100 ngmL	C:\MassHunter\ISP Methods\Acquisition\Benzos_Z_Drugs_ACN_FA_ISP.m	100 ngmL_r001.d	Calibration	5	AM 6.1.1 Benzo	

Sample Position	Sample Name	Method	Data File	Sample Type	Level Name	Comment	Info.
P1-A1	Blank	C:\MassHunter\ISP Methods\Acquisition\Benzos_Z_Drugs_Cleanup.m	Clean-r001.d	Blank		AM 6.1.1 Benzo and Z by LCQQQ	



ISP FORENSICS

Pocatello

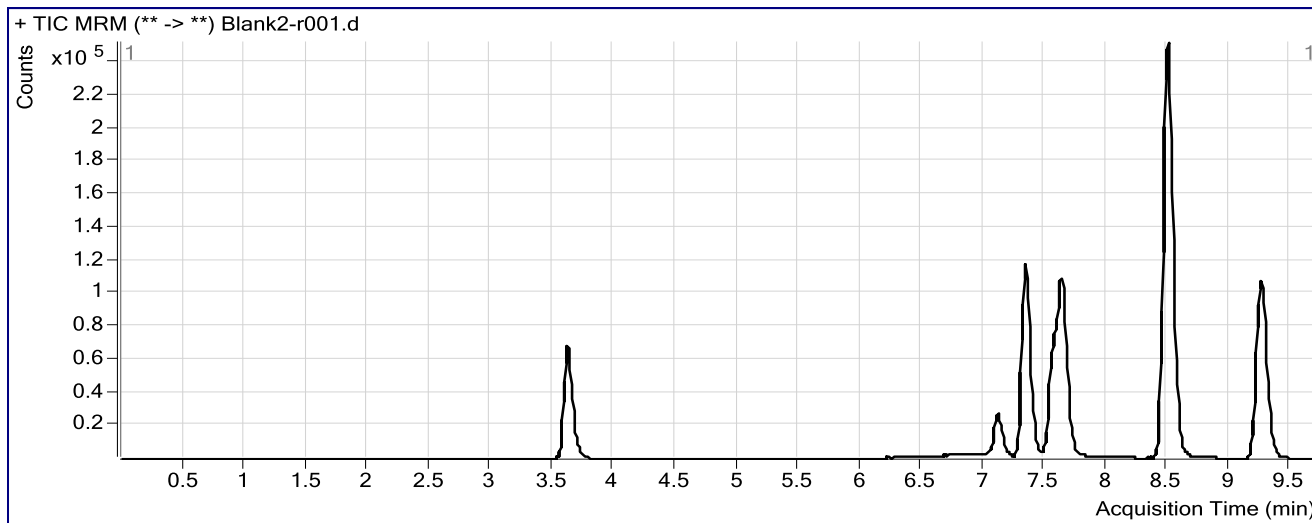
Benzodiazepine Analysis Report

Batch Data Path	C:\MassHunter\Data\BZ\BZ-B-10062015\QuantResults\BZ-B 100715 CS3.batch.bin		
Analysis Time	10/13/2015 8:23 AM	Analyst Name	datastor
Report Time	10/13/2015 8:26 AM	Reporter Name	ISPUser
Last Calib Update	10/13/2015 8:23 AM	Batch State	Processed

Analysis Info

Acq Time	2015-10-06 14:44	Data File	Blank2-r001.d
Sample Type	Blank	Sample Name	Blank
Dilution	1	Acq Method	Benzos_Z_Drugs_ACN_FA_ISP.m
Position	P1-A1	Sample Info	
Inj Vol	-1	Comment	AM 6.1.1 Benzo and Z by LCQQQ

Sample Chromatogram



ISP FORENSICS

Pocatello

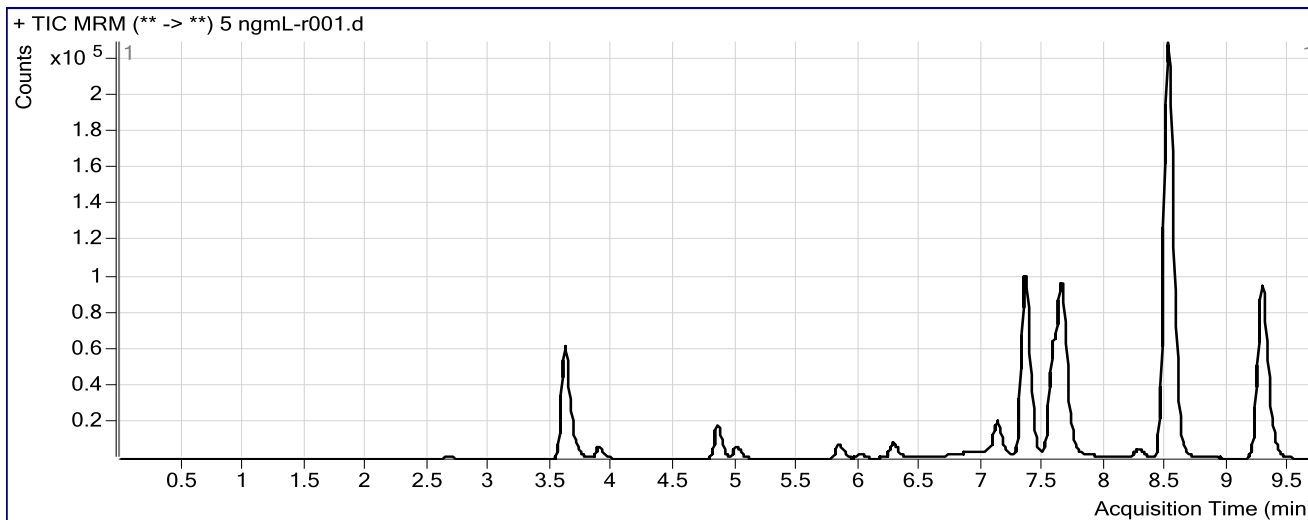
Benzodiazepine Analysis Report

Batch Data Path	C:\MassHunter\Data\BZ\BZ-B-10062015\QuantResults\BZ-B 100715 CS3.batch.bin		
Analysis Time	10/13/2015 8:23 AM	Analyst Name	datastor
Report Time	10/13/2015 8:26 AM	Reporter Name	ISPUser
Last Calib Update	10/13/2015 8:23 AM	Batch State	Processed

Analysis Info

Acq Time	2015-10-06 14:58	Data File	5 ngmL-r001.d
Sample Type	Calibration	Sample Name	5 ngmL
Dilution	1	Acq Method	Benzos_Z_Drugs_ACN_FA_ISP.m
Position	P1-A2	Sample Info	
Inj Vol	-1	Comment	AM 6.1.1 Benzo and Z by LCQQQ

Sample Chromatogram



Results

Compound	ISTD Compound	RT	Response	ISTD Resp	Resp Ratio	Final Conc
7-Aminoclonazepam	7-Aminoflunitrazepam-D7 ISTD	2.667	4410	262435	0.0168	5.7666
7-Aminoflunitrazepam	7-Aminoflunitrazepam-D7 ISTD	3.705	9698	262435	0.0370	2.5796
zopiclone	Nordiazepam-D5 ISTD	3.883	17489	96324	0.1816	1.5968
zolpidem	Nordiazepam-D5 ISTD	4.844	62598	96324	0.6499	3.0394
Chlordiazepoxide	Nordiazepam-D5 ISTD	5.008	21220	96324	0.2203	5.3087
Midazolam	Clonazepam-D4 ISTD	6.002	10468	280033	0.0374	3.5794
Nitrazepam	Clonazepam-D4 ISTD	7.052	5554	280033	0.0198	3.6058
alpha-hydroxytriazolam	Nordiazepam-D5 ISTD	7.206	1669	96324	0.0173	3.9143
Oxazepam	Nordiazepam-D5 ISTD	7.389	13944	96324	0.1448	4.7409
Nordiazepam	Nordiazepam-D5 ISTD	7.660	6888	96324	0.0715	5.6102
Clonazepam	Clonazepam-D4 ISTD	7.680	7405	280033	0.0264	5.6339
Lorazepam	Nordiazepam-D5 ISTD	7.738	2282	96324	0.0237	7.8703
Alprazolam	alphahydroxyalprazolam-D5 ISTD	7.850	3868	56624	0.0683	7.0420
Flunitrazepam	Clonazepam-D4 ISTD	8.258	17261	280033	0.0616	5.5674

ISP FORENSICS

Pocatello

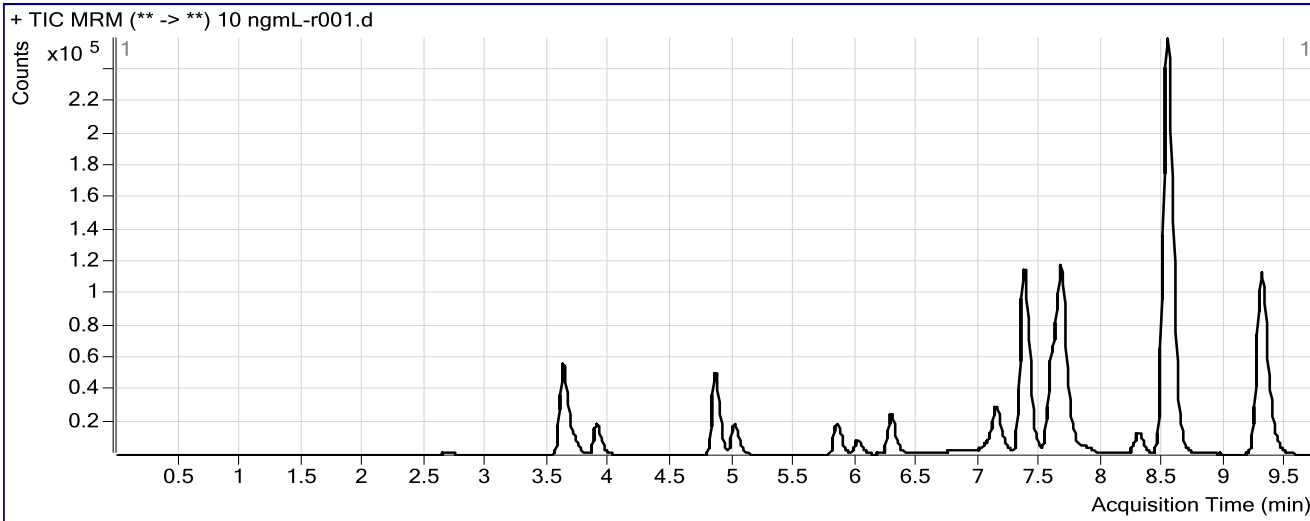
Benzodiazepine Analysis Report

Batch Data Path	C:\MassHunter\Data\BZ\BZ-B-10062015\QuantResults\BZ-B 100715 CS3.batch.bin		
Analysis Time	10/13/2015 8:23 AM	Analyst Name	datastor
Report Time	10/13/2015 8:26 AM	Reporter Name	ISPUser
Last Calib Update	10/13/2015 8:23 AM	Batch State	Processed

Analysis Info

Acq Time	2015-10-06 15:13	Data File	10 ngmL-r001.d
Sample Type	Calibration	Sample Name	10 ngmL
Dilution	1	Acq Method	Benzos_Z_Drugs_ACN_FA_ISP.m
Position	P1-A3	Sample Info	
Inj Vol	-1	Comment	AM 6.1.1 Benzo and Z by LCQQQ

Sample Chromatogram



Results

Compound	ISTD Compound	RT	Response	ISTD Resp	Resp Ratio	Final Conc
7-Aminoclonazepam	7-Aminoflunitrazepam-D7 ISTD	2.684	7540	233363	0.0323	9.7413
7-Aminoflunitrazepam	7-Aminoflunitrazepam-D7 ISTD	3.713	20384	233363	0.0873	8.7538
zopiclone	Nordiazepam-D5 ISTD	3.891	49857	116930	0.4264	8.7334
zolpidem	Nordiazepam-D5 ISTD	4.844	171535	116930	1.4670	9.5776
Chlordiazepoxide	Nordiazepam-D5 ISTD	5.016	59846	116930	0.5118	11.0873
quetiapine	Temazepam-D5 ISTD	5.841	54269	924633	0.0587	9.0826
Midazolam	Clonazepam-D4 ISTD	6.011	31056	356354	0.0871	9.9504
Flurazepam	Diazepam-D5 ISTD	6.273	87820	121530	0.7226	10.5311
Nitrazepam	Clonazepam-D4 ISTD	7.069	16813	356354	0.0472	9.7975
alpha-Hydroxyalprazolam	alphahydroxyalprazolam-D5 ISTD	7.165	2828	93530	0.0302	10.5103
alpha-hydroxytriazolam	Nordiazepam-D5 ISTD	7.206	5181	116930	0.0443	11.1253
Oxazepam	Nordiazepam-D5 ISTD	7.405	37561	116930	0.3212	10.6723
Nordiazepam	Nordiazepam-D5 ISTD	7.685	18137	116930	0.1551	10.9893
Clonazepam	Clonazepam-D4 ISTD	7.697	20442	356354	0.0574	10.3210
Lorazepam	Nordiazepam-D5 ISTD	7.754	5468	116930	0.0468	11.7113
Alprazolam	alphahydroxyalprazolam-D5 ISTD	7.858	13536	93530	0.1447	10.6223
Flunitrazepam	Clonazepam-D4 ISTD	8.283	49310	356354	0.1384	10.5753
Temazepam	Temazepam-D5 ISTD	8.571	75687	924633	0.0819	10.8879
Diazepam	Diazepam-D5 ISTD	9.382	34241	121530	0.2818	9.3849



ISP FORENSICS

Pocatello

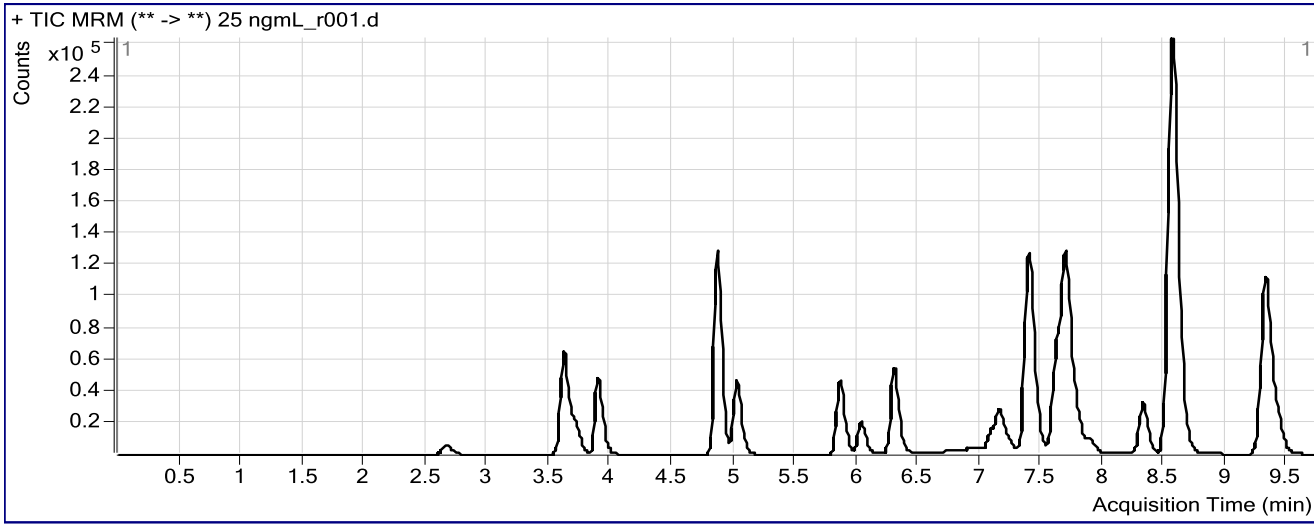
Benzodiazepine Analysis Report

Batch Data Path C:\MassHunter\Data\BZ\BZ-B-10062015\QuantResults\BZ-B 100715 CS3.batch.bin
Analysis Time 10/13/2015 8:23 AM **Analyst Name** datastor
Report Time 10/13/2015 8:26 AM **Reporter Name** ISPUser
Last Calib Update 10/13/2015 8:23 AM **Batch State** Processed

Analysis Info

Acq Time 2015-10-06 15:27 **Data File** 25 ngmL_r001.d
Sample Type Calibration **Sample Name** 25 ngmL
Dilution 1 **Acq Method** Benzos_Z_Drugs_ACN_FA_ISP.m
Position P1-A4 **Sample Info**
Inj Vol -1 **Comment** AM 6.1.1 Benzo and Z by LCQQQ

Sample Chromatogram



Results

Compound	ISTD Compound	RT	Response	ISTD Resp	Resp Ratio	Final Conc
7-Aminoclonazepam	7-Aminoflunitrazepam-D7 ISTD	2.667	25000	274378	0.0911	24.8396
7-Aminoflunitrazepam	7-Aminoflunitrazepam-D7 ISTD	3.713	58124	274378	0.2118	24.0336
zopiclone	Nordiazepam-D5 ISTD	3.891	132928	133551	0.9953	25.3209
zolpidem	Nordiazepam-D5 ISTD	4.852	438774	133551	3.2854	24.1547
Chlordiazepoxide	Nordiazepam-D5 ISTD	5.025	152155	133551	1.1393	23.5393
quetiapine	Temazepam-D5 ISTD	5.858	130193	1068044	0.1219	24.5151
Midazolam	Clonazepam-D4 ISTD	6.027	70832	361450	0.1960	23.8681
Flurazepam	Diazepam-D5 ISTD	6.290	212071	219542	0.9660	23.3722
Nitrazepam	Clonazepam-D4 ISTD	7.094	39224	361450	0.1085	23.6415
alpha-Hydroxyalprazolam	alphahydroxyalprazolam-D5 ISTD	7.199	6204	77549	0.0800	23.9295
alpha-hydroxytriazolam	Nordiazepam-D5 ISTD	7.231	12376	133551	0.0927	24.0613
Oxazepam	Nordiazepam-D5 ISTD	7.422	95083	133551	0.7120	23.8245
Nordiazepam	Nordiazepam-D5 ISTD	7.710	48286	133551	0.3616	24.2963
Clonazepam	Clonazepam-D4 ISTD	7.731	50179	361450	0.1388	22.6881
Lorazepam	Nordiazepam-D5 ISTD	7.780	15788	133551	0.1182	23.6271
Alprazolam	alphahydroxyalprazolam-D5 ISTD	7.884	30763	77549	0.3967	22.4520
Flunitrazepam	Clonazepam-D4 ISTD	8.309	117600	361450	0.3254	22.7678
Temazepam	Temazepam-D5 ISTD	8.605	188948	1068044	0.1769	22.7559
Diazepam	Diazepam-D5 ISTD	9.407	80607	219542	0.3672	21.0546



ISP FORENSICS

Pocatello

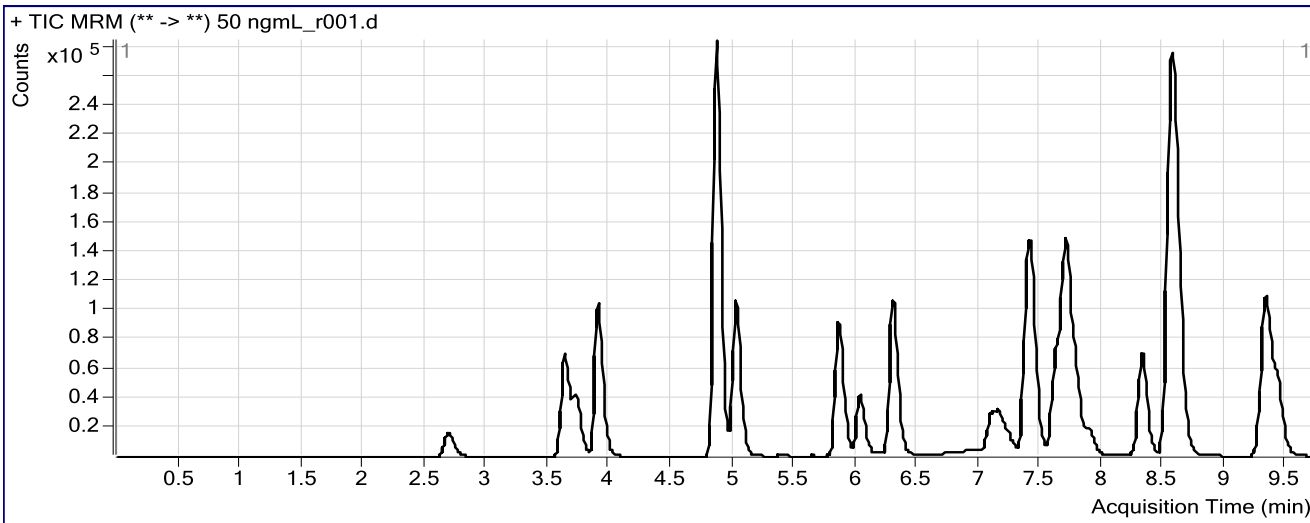
Benzodiazepine Analysis Report

Batch Data Path	C:\MassHunter\Data\BZ\BZ-B-10062015\QuantResults\BZ-B 100715 CS3.batch.bin		
Analysis Time	10/13/2015 8:23 AM	Analyst Name	datastor
Report Time	10/13/2015 8:26 AM	Reporter Name	ISPUser
Last Calib Update	10/13/2015 8:23 AM	Batch State	Processed

Analysis Info

Acq Time	2015-10-06 15:42	Data File	50 ngmL_r001.d
Sample Type	Calibration	Sample Name	50 ngmL
Dilution	1	Acq Method	Benzos_Z_Drugs_ACN_FA_ISP.m
Position	P1-A5	Sample Info	
Inj Vol	-1	Comment	AM 6.1.1 Benzo and Z by LCQQQ

Sample Chromatogram



Results

Compound	ISTD Compound	RT	Response	ISTD Resp	Resp Ratio	Final Conc
7-Aminoclonazepam	7-Aminoflunitrazepam-D7 ISTD	2.692	62433	295016	0.2116	55.8892
7-Aminoflunitrazepam	7-Aminoflunitrazepam-D7 ISTD	3.730	133912	295016	0.4539	53.8578
zopiclone	Nordiazepam-D5 ISTD	3.900	288342	142377	2.0252	55.3548
zolpidem	Nordiazepam-D5 ISTD	4.860	975105	142377	6.8487	52.8266
Chlordiazepoxide	Nordiazepam-D5 ISTD	5.025	344356	142377	2.4186	48.9814
quetiapine	Temazepam-D5 ISTD	5.849	261574	1053086	0.2484	55.4298
Midazolam	Clonazepam-D4 ISTD	6.027	146385	352826	0.4149	51.8173
Flurazepam	Diazepam-D5 ISTD	6.290	424739	289446	1.4674	49.8336
Nitrazepam	Clonazepam-D4 ISTD	7.094	82235	352826	0.2331	51.5653
alpha-Hydroxyalprazolam	alphahydroxyalprazolam-D5 ISTD	7.190	12580	81689	0.1540	43.8841
alpha-hydroxytriazolam	Nordiazepam-D5 ISTD	7.231	26967	142377	0.1894	49.9771
Oxazepam	Nordiazepam-D5 ISTD	7.431	209627	142377	1.4723	49.4896
Nordiazepam	Nordiazepam-D5 ISTD	7.710	104867	142377	0.7365	48.5552
Clonazepam	Clonazepam-D4 ISTD	7.723	113525	352826	0.3218	50.5615
Lorazepam	Nordiazepam-D5 ISTD	7.780	36054	142377	0.2532	46.2330
Alprazolam	alphahydroxyalprazolam-D5 ISTD	7.884	69662	81689	0.8528	43.9606
Flunitrazepam	Clonazepam-D4 ISTD	8.309	266171	352826	0.7544	50.6919
Temazepam	Temazepam-D5 ISTD	8.605	418842	1053086	0.3977	50.3613
Diazepam	Diazepam-D5 ISTD	9.415	180396	289446	0.6232	55.9416



ISP FORENSICS

Pocatello

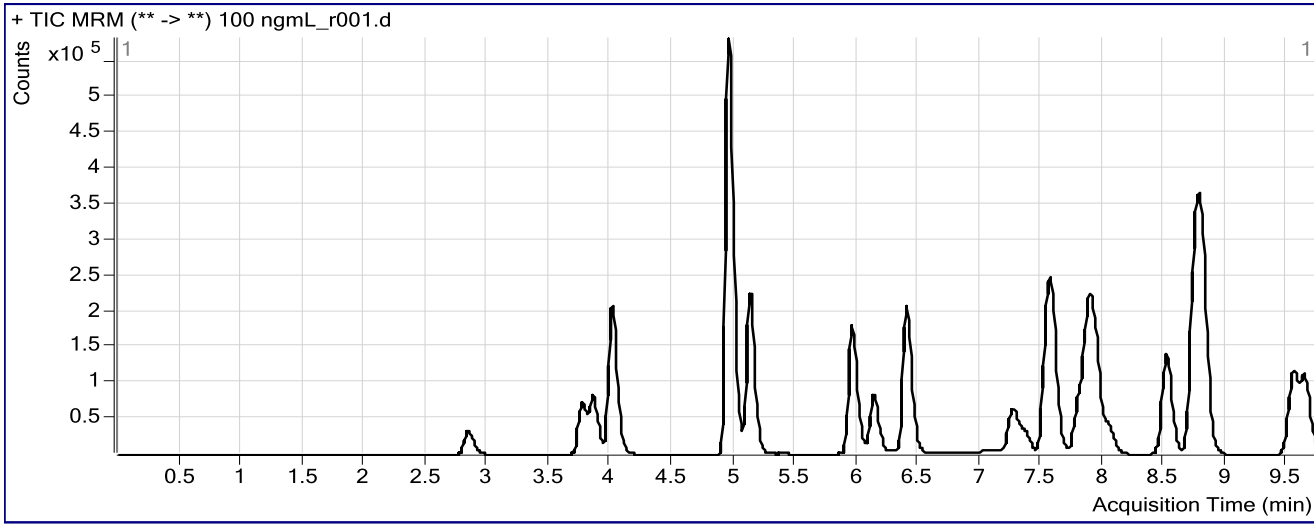
Benzodiazepine Analysis Report

Batch Data Path	C:\MassHunter\Data\BZ\BZ-B-10062015\QuantResults\BZ-B 100715 CS3.batch.bin		
Analysis Time	10/13/2015 8:23 AM	Analyst Name	datastor
Report Time	10/13/2015 8:26 AM	Reporter Name	ISPUser
Last Calib Update	10/13/2015 8:23 AM	Batch State	Processed

Analysis Info

Acq Time	2015-10-06 15:57	Data File	100 ngmL_r001.d
Sample Type	Calibration	Sample Name	100 ngmL
Dilution	1	Acq Method	Benzos_Z_Drugs_ACN_FA_ISP.m
Position	P1-A6	Sample Info	
Inj Vol	-1	Comment	AM 6.1.1 Benzo and Z by LCQQQ

Sample Chromatogram



Results

Compound	ISTD Compound	RT	Response	ISTD Resp	Resp Ratio	Final Conc
7-Aminoclonazepam	7-Aminoflunitrazepam-D7 ISTD	2.843	129923	314074	0.4137	108.2773
7-Aminoflunitrazepam	7-Aminoflunitrazepam-D7 ISTD	3.863	287609	314074	0.9157	111.1738
zopiclone	Nordiazepam-D5 ISTD	4.008	588119	161124	3.6501	102.7640
zolpidem	Nordiazepam-D5 ISTD	4.955	2123169	161124	13.1772	104.1056
Chlordiazepoxide	Nordiazepam-D5 ISTD	5.126	772406	161124	4.7938	96.4172
quetiapine	Temazepam-D5 ISTD	5.950	538256	1236928	0.4352	101.1517
Midazolam	Clonazepam-D4 ISTD	6.126	301816	378852	0.7967	100.3909
Flurazepam	Diazepam-D5 ISTD	6.390	890509	364732	2.4415	101.2394
Nitrazepam	Clonazepam-D4 ISTD	7.246	176667	378852	0.4663	103.1963
alpha-Hydroxyalprazolam	alphanhydroxyalprazolam-D5 ISTD	7.325	25394	79128	0.3209	88.8976
alpha-hydroxytriazolam	Nordiazepam-D5 ISTD	7.366	56387	161124	0.3500	93.1071
Oxazepam	Nordiazepam-D5 ISTD	7.583	478491	161124	2.9697	100.3093
Nordiazepam	Nordiazepam-D5 ISTD	7.887	234299	161124	1.4541	95.2998
Clonazepam	Clonazepam-D4 ISTD	7.890	256588	378852	0.6773	105.1416
Lorazepam	Nordiazepam-D5 ISTD	7.939	89858	161124	0.5577	97.6627
Alprazolam	alphanhydroxyalprazolam-D5 ISTD	8.036	158932	79128	2.0085	99.0301
Flunitrazepam	Clonazepam-D4 ISTD	8.501	579252	378852	1.5290	100.9196
Temazepam	Temazepam-D5 ISTD	8.787	980774	1236928	0.7929	99.8877
Diazepam	Diazepam-D5 ISTD	9.624	360154	364732	0.9874	105.2926



ISP FORENSICS

Pocatello

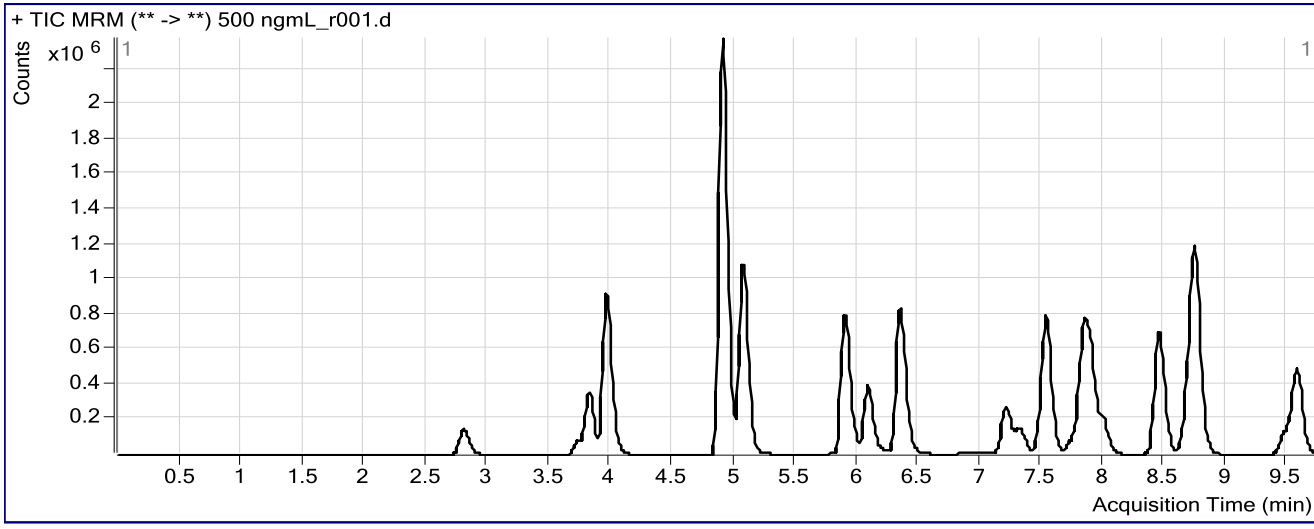
Benzodiazepine Analysis Report

Batch Data Path	C:\MassHunter\Data\BZ\BZ-B-10062015\QuantResults\BZ-B 100715 CS3.batch.bin		
Analysis Time	10/13/2015 8:23 AM	Analyst Name	datastor
Report Time	10/13/2015 8:26 AM	Reporter Name	ISPUser
Last Calib Update	10/13/2015 8:23 AM	Batch State	Processed

Analysis Info

Acq Time	2015-10-06 16:11	Data File	500 ngmL_r001.d
Sample Type	Calibration	Sample Name	500 ngmL
Dilution	1	Acq Method	Benzos_Z_Drugs_ACN_FA_ISP.m
Position	P1-A7	Sample Info	
Inj Vol	-1	Comment	AM 6.1.1 Benzo and Z by LCQQQ

Sample Chromatogram



Results

Compound	ISTD Compound	RT	Response	ISTD Resp	Resp Ratio	Final Conc
7-Aminoclonazepam	7-Aminoflunitrazepam-D7 ISTD	2.801	569336	345377	1.6484	438.0465
7-Aminoflunitrazepam	7-Aminoflunitrazepam-D7 ISTD	3.822	1334052	345377	3.8626	490.8960
zopiclone	Nordiazepam-D5 ISTD	3.958	2708444	161631	16.7570	486.1906
zolpidem	Nordiazepam-D5 ISTD	4.902	9394766	161631	58.1248	482.5978
Chlordiazepoxide	Nordiazepam-D5 ISTD	5.075	3945457	161631	24.4103	498.6295
quetiapine	Temazepam-D5 ISTD	5.891	2550795	1250930	2.0391	497.5747
Midazolam	Clonazepam-D4 ISTD	6.085	1504857	366641	4.1044	512.8967
Flurazepam	Diazepam-D5 ISTD	6.340	3881304	385747	10.0618	503.4533
Nitrazepam	Clonazepam-D4 ISTD	7.204	903126	366641	2.4632	514.9860
alpha-Hydroxyalprazolam	alphahydroxyalprazolam-D5 ISTD	7.291	133035	69189	1.9228	520.8435
alpha-hydroxytriazolam	Nordiazepam-D5 ISTD	7.324	286324	161631	1.7715	481.5659
Oxazepam	Nordiazepam-D5 ISTD	7.532	2240060	161631	13.8591	481.7841
Nordiazepam	Nordiazepam-D5 ISTD	7.828	1184562	161631	7.3288	495.3944
Clonazepam	Clonazepam-D4 ISTD	7.840	1161488	366641	3.1679	504.1150
Lorazepam	Nordiazepam-D5 ISTD	7.889	423687	161631	2.6213	464.5779
Alprazolam	alphahydroxyalprazolam-D5 ISTD	7.994	778380	69189	11.2500	573.1924
Flunitrazepam	Clonazepam-D4 ISTD	8.443	2922739	366641	7.9717	509.9041
Temazepam	Temazepam-D5 ISTD	8.730	4847586	1250930	3.8752	491.7571
Diazepam	Diazepam-D5 ISTD	9.557	1723446	385747	4.4678	562.2421

ISP FORENSICS

Pocatello

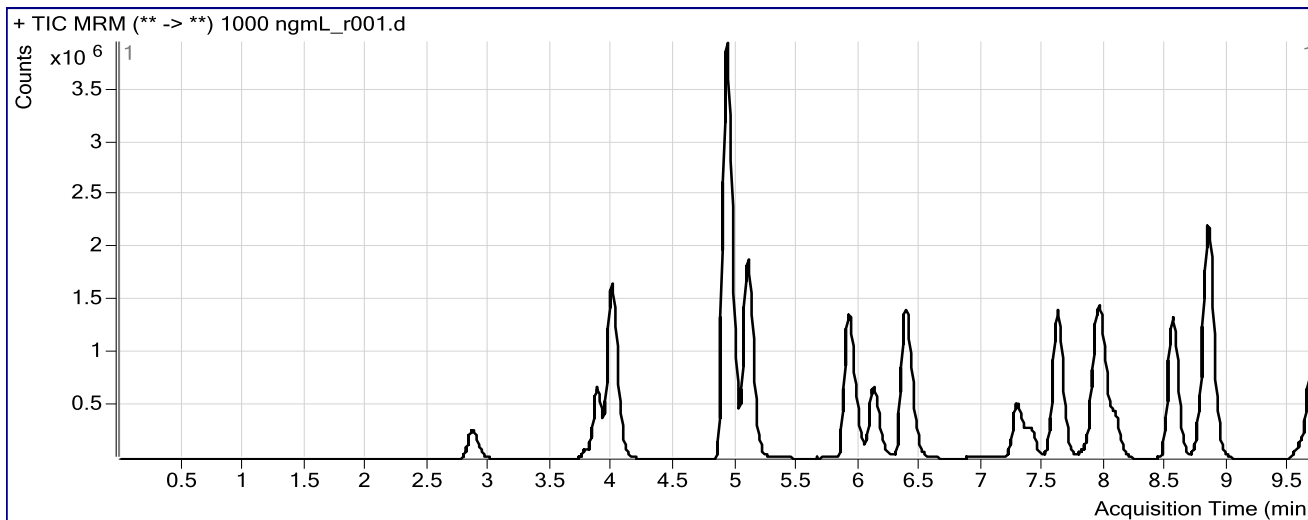
Benzodiazepine Analysis Report

Batch Data Path	C:\MassHunter\Data\BZ\BZ-B-10062015\QuantResults\BZ-B 100715 CS3.batch.bin		
Analysis Time	10/13/2015 8:23 AM	Analyst Name	datastor
Report Time	10/13/2015 8:26 AM	Reporter Name	ISPUser
Last Calib Update	10/13/2015 8:23 AM	Batch State	Processed

Analysis Info

Acq Time	2015-10-06 16:26	Data File	1000 ngmL_r001.d
Sample Type	Calibration	Sample Name	1000 ngmL
Dilution	1	Acq Method	Benzos_Z_Drugs_ACN_FA_ISP.m
Position	P1-A8	Sample Info	
Inj Vol	-1	Comment	AM 6.1.1 Benzo and Z by LCQQQ

Sample Chromatogram



Results

Compound	ISTD Compound	RT	Response	ISTD Resp	Resp Ratio	Final Conc
7-Aminoclonazepam	7-Aminoflunitrazepam-D7 ISTD	2.859	1121235	348103	3.2210	885.3060
7-Aminoflunitrazepam	7-Aminoflunitrazepam-D7 ISTD	3.872	2590633	348103	7.4421	990.6232
zopiclone	Nordiazepam-D5 ISTD	3.992	5241596	152136	34.4533	1006.7608
zolpidem	Nordiazepam-D5 ISTD	4.919	17651102	152136	116.0216	1014.2987
Chlordiazepoxide	Nordiazepam-D5 ISTD	5.092	7301876	152136	47.9956	1009.9330
quetiapine	Temazepam-D5 ISTD	5.908	5081762	1266154	4.0135	995.1997
Midazolam	Clonazepam-D4 ISTD	6.110	2883352	359587	8.0185	983.1335
Flurazepam	Diazepam-D5 ISTD	6.365	7381393	380776	19.3851	995.7572
Nitrazepam	Clonazepam-D4 ISTD	7.280	1801314	359587	5.0094	979.8622
alpha-Hydroxyalprazolam	alphahydroxyalprazolam-D5 ISTD	7.350	326415	85381	3.8230	1033.2582
alpha-hydroxytriazolam	Nordiazepam-D5 ISTD	7.391	565780	152136	3.7189	1034.5745
Oxazepam	Nordiazepam-D5 ISTD	7.608	4308924	152136	28.3228	1025.9738
Nordiazepam	Nordiazepam-D5 ISTD	7.912	2170441	152136	14.2664	1016.8324
Clonazepam	Clonazepam-D4 ISTD	7.924	2133470	359587	5.9331	987.9668
Lorazepam	Nordiazepam-D5 ISTD	7.973	848540	152136	5.5775	1062.7378
Alprazolam	alphahydroxyalprazolam-D5 ISTD	8.070	1743214	85381	20.4168	1125.9321
Flunitrazepam	Clonazepam-D4 ISTD	8.535	5686268	359587	15.8133	988.2298
Temazepam	Temazepam-D5 ISTD	8.820	9936908	1266154	7.8481	1012.4150
Diazepam	Diazepam-D5 ISTD	9.666	2782195	380776	7.3066	917.2678



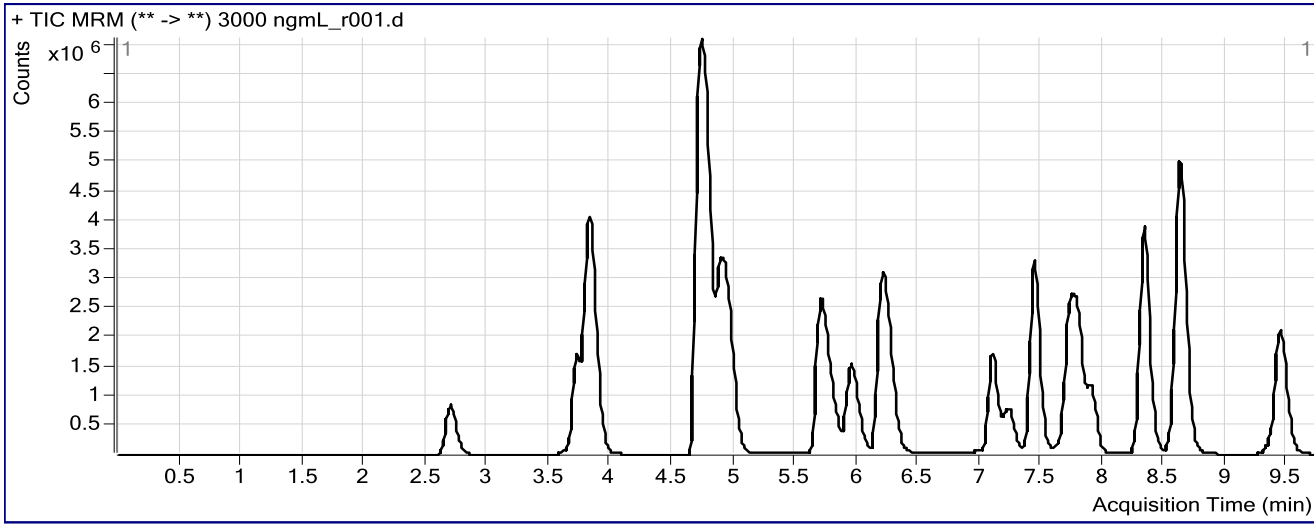
ISP FORENSICS
Pocatello
Benzodiazepine Analysis Report

Batch Data Path C:\MassHunter\Data\BZ\BZ-B-10062015\QuantResults\BZ-B 100715 CS3.batch.bin
Analysis Time 10/13/2015 8:23 AM **Analyst Name** datastor
Report Time 10/13/2015 8:26 AM **Reporter Name** ISPUser
Last Calib Update 10/13/2015 8:23 AM **Batch State** Processed

Analysis Info

Acq Time 2015-10-06 16:40 **Data File** 3000 ngmL_r001.d
Sample Type Calibration **Sample Name** 3000 ngmL
Dilution 1 **Acq Method** Benzos_Z_Drugs_ACN_FA_ISP.m
Position P1-A9 **Sample Info**
Inj Vol -1 **Comment** AM 6.1.1 Benzo and Z by LCQQQ

Sample Chromatogram



Results

Compound	ISTD Compound	RT	Response	ISTD Resp	Resp Ratio	Final Conc
7-Aminoclonazepam	7-Aminoflunitrazepam-D7 ISTD	2.701	3479850	361744	9.6196	3269.7340
7-Aminoflunitrazepam	7-Aminoflunitrazepam-D7 ISTD	3.721	6670156	361744	18.4389	3007.1604
zopiclone	Nordiazepam-D5 ISTD	3.824	15664395	154851	101.1579	2999.8776
zolpidem	Nordiazepam-D5 ISTD	4.735	43031035	154851	277.8867	2996.9745
Chlordiazepoxide	Nordiazepam-D5 ISTD	4.915	19396443	154851	125.2588	2996.0833
quetiapine	Temazepam-D5 ISTD	5.707	12819606	1111323	11.5354	3002.0720
Midazolam	Clonazepam-D4 ISTD	5.952	7992612	300832	26.5683	3003.0308
Flurazepam	Diazepam-D5 ISTD	6.197	20664622	360549	57.3143	3000.8132
Nitrazepam	Clonazepam-D4 ISTD	7.094	5924529	300832	19.6938	3002.9554
alpha-Hydroxyalprazolam	alphahydroxyalprazolam-D5 ISTD	7.190	1149043	89857	12.7875	3450.5693
alpha-hydroxytriazolam	Nordiazepam-D5 ISTD	7.239	1531125	154851	9.8877	2990.3086
Oxazepam	Nordiazepam-D5 ISTD	7.439	10853350	154851	70.0890	2992.0041
Nordiazepam	Nordiazepam-D5 ISTD	7.710	5135725	154851	33.1656	2991.3995
Clonazepam	Clonazepam-D4 ISTD	7.731	4346089	300832	14.4469	3005.4889
Lorazepam	Nordiazepam-D5 ISTD	7.788	1798868	154851	11.6168	2965.0771
Alprazolam	alphahydroxyalprazolam-D5 ISTD	7.892	3193130	89857	35.5357	2475.8064
Flunitrazepam	Clonazepam-D4 ISTD	8.317	15779373	300832	52.4524	3001.9766
Temazepam	Temazepam-D5 ISTD	8.613	24127259	1111323	21.7104	2996.8697
Diazepam	Diazepam-D5 ISTD	9.432	9546296	360549	26.4771	3014.1809



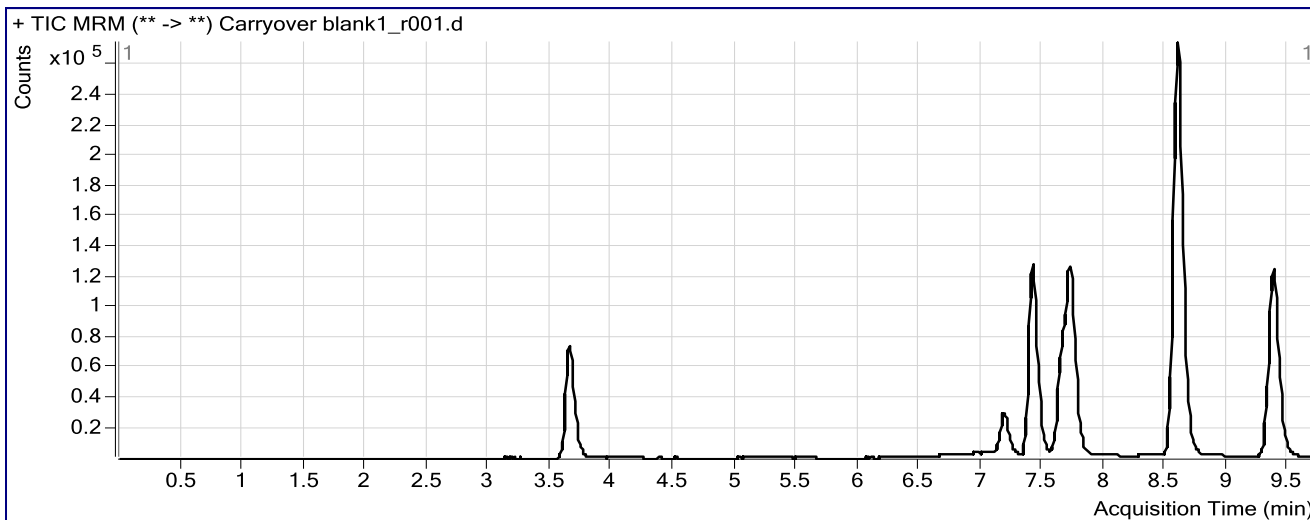
ISP FORENSICS
Pocatello
Benzodiazepine Analysis Report

Batch Data Path	C:\MassHunter\Data\BZ\BZ-B-10062015\QuantResults\BZ-B 100715 CS3.batch.bin		
Analysis Time	10/13/2015 8:23 AM	Analyst Name	datastor
Report Time	10/13/2015 8:26 AM	Reporter Name	ISPUser
Last Calib Update	10/13/2015 8:23 AM	Batch State	Processed

Analysis Info

Acq Time	2015-10-06 16:55	Data File	Carryover blank1_r001.d
Sample Type	Blank	Sample Name	Blank
Dilution	1	Acq Method	Benzos_Z_Drugs_ACN_FA_ISP.m
Position	P1-A1	Sample Info	
Inj Vol	-1	Comment	AM 6.1.1 Benzo and Z by LCQQQ

Sample Chromatogram



ISP FORENSICS

Pocatello

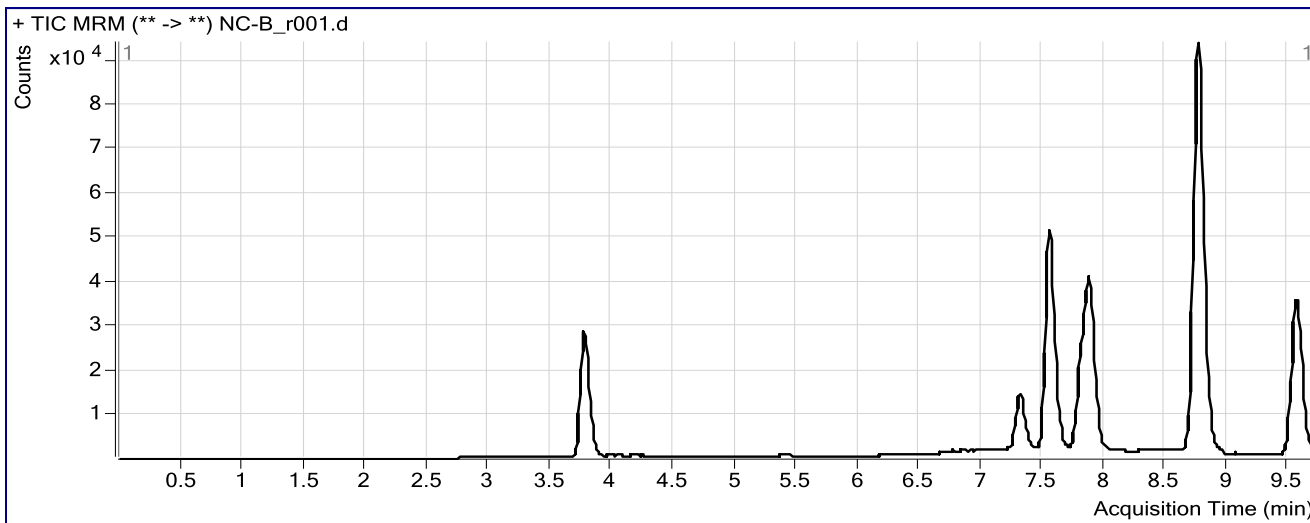
Benzodiazepine Analysis Report

Batch Data Path	C:\MassHunter\Data\BZ\BZ-B-10062015\QuantResults\BZ-B 100715 CS3.batch.bin		
Analysis Time	10/13/2015 8:23 AM	Analyst Name	datastor
Report Time	10/13/2015 8:26 AM	Reporter Name	ISPUser
Last Calib Update	10/13/2015 8:23 AM	Batch State	Processed

Analysis Info

Acq Time	2015-10-06 17:10	Data File	NC-B_r001.d
Sample Type	Sample	Sample Name	Negative Blood Control
Dilution	1	Acq Method	Benzos_Z_Drugs_ACN_FA_ISP.m
Position	P1-B1	Sample Info	UTAK Negative Whole Blood LOT B0689
Inj Vol	-1	Comment	AM 6.1.1 Benzo and Z by LCQQQ

Sample Chromatogram



ISP FORENSICS

Pocatello

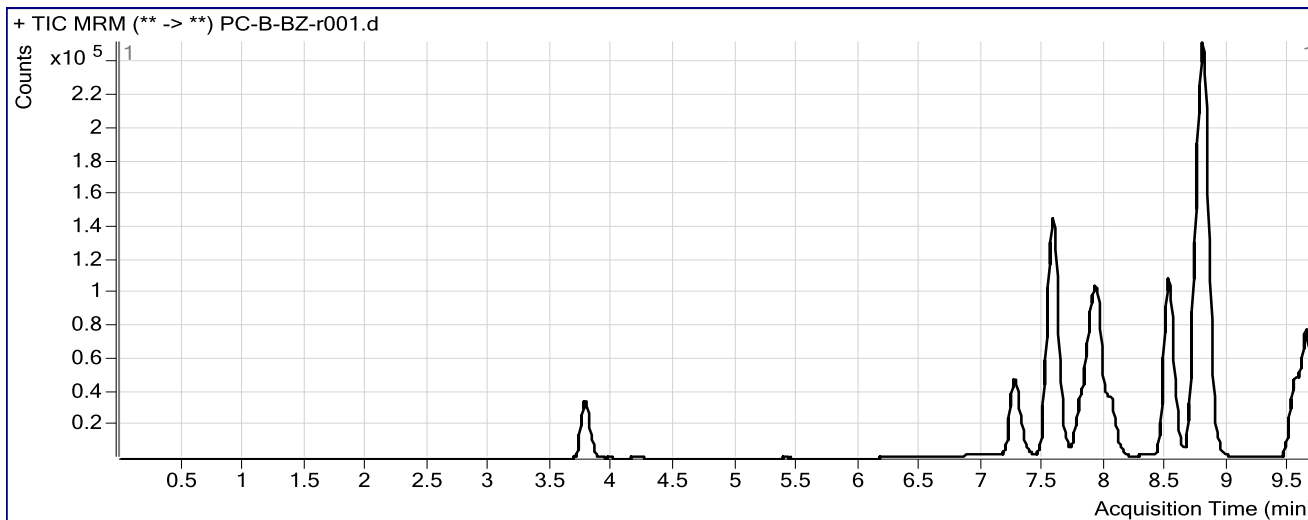
Benzodiazepine Analysis Report

Batch Data Path	C:\MassHunter\Data\BZ\BZ-B-10062015\QuantResults\BZ-B 100715 CS3.batch.bin		
Analysis Time	10/13/2015 8:23 AM	Analyst Name	datastor
Report Time	10/13/2015 8:26 AM	Reporter Name	ISPUser
Last Calib Update	10/13/2015 8:23 AM	Batch State	Processed

Analysis Info

Acq Time	2015-10-06 17:24	Data File	PC-B-BZ-r001.d
Sample Type	Sample	Sample Name	Positive Blood Control
Dilution	1	Acq Method	Benzos_Z_Drugs_ACN_FA_ISP.m
Position	P1-B2	Sample Info	200 ng/mL Benzodiazepines Mix Cerilliant lot FE012413-02 in neg LOT B0
Inj Vol	-1	Comment	AM 6.1.1 Benzo and Z by LCQQQ

Sample Chromatogram



Results

Compound	ISTD Compound	RT	Response	ISTD Resp	Resp Ratio	Final Conc
Nitrazepam	Clonazepam-D4 ISTD	7.246	142382	176794	0.8054	176.7836
Oxazepam	Nordiazepam-D5 ISTD	7.583	347581	66035	5.2636	178.8958
Clonazepam	Clonazepam-D4 ISTD	7.890	216458	176794	1.2244	190.2203
Lorazepam	Nordiazepam-D5 ISTD	7.939	62064	66035	0.9399	163.1333
Alprazolam	alphanhydroxylprazolam-D5 ISTD	8.036	139580	41971	3.3256	162.8070
Flunitrazepam	Clonazepam-D4 ISTD	8.501	459945	176794	2.6016	170.0883
Temazepam	Temazepam-D5 ISTD	8.787	879332	555672	1.5825	199.3167
Diazepam	Diazepam-D5 ISTD	9.624	290975	147138	1.9776	237.9291

ISP FORENSICS

Pocatello

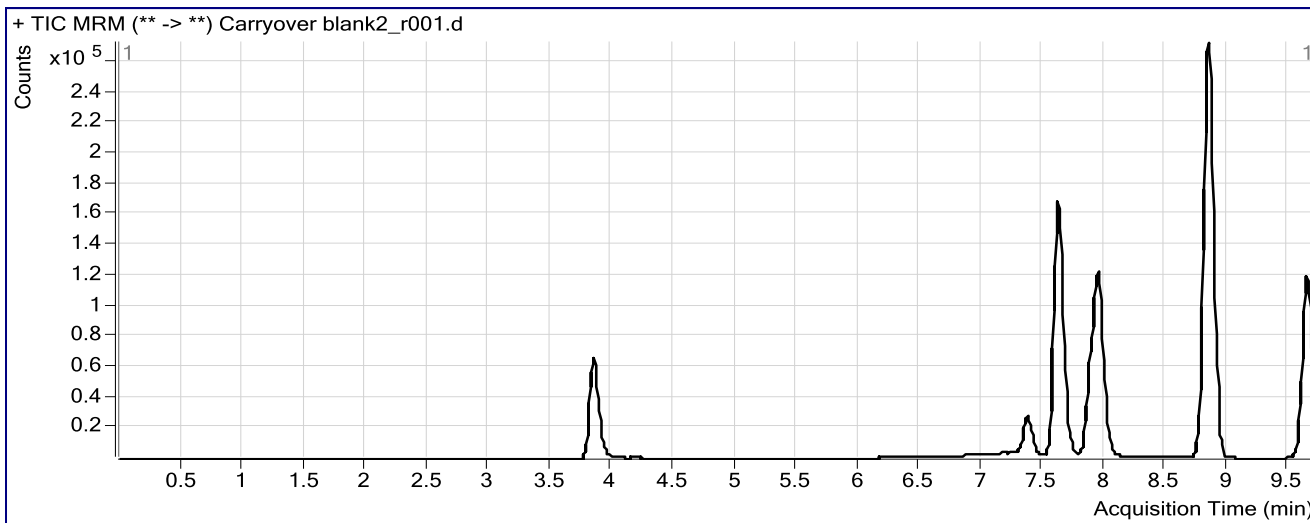
Benzodiazepine Analysis Report

Batch Data Path C:\MassHunter\Data\BZ\BZ-B-10062015\QuantResults\BZ-B 100715 CS3.batch.bin
Analysis Time 10/13/2015 8:23 AM **Analyst Name** datastor
Report Time 10/13/2015 8:26 AM **Reporter Name** ISPUser
Last Calib Update 10/13/2015 8:23 AM **Batch State** Processed

Analysis Info

Acq Time 2015-10-06 17:39 **Data File** Carryover blank2_r001.d
Sample Type Blank **Sample Name** Blank
Dilution 1 **Acq Method** Benzos_Z_Drugs_ACN_FA_ISP.m
Position P1-A1 **Sample Info**
Inj Vol -1 **Comment** AM 6.1.1 Benzo and Z by LCQQQ

Sample Chromatogram



ISP FORENSICS

Pocatello

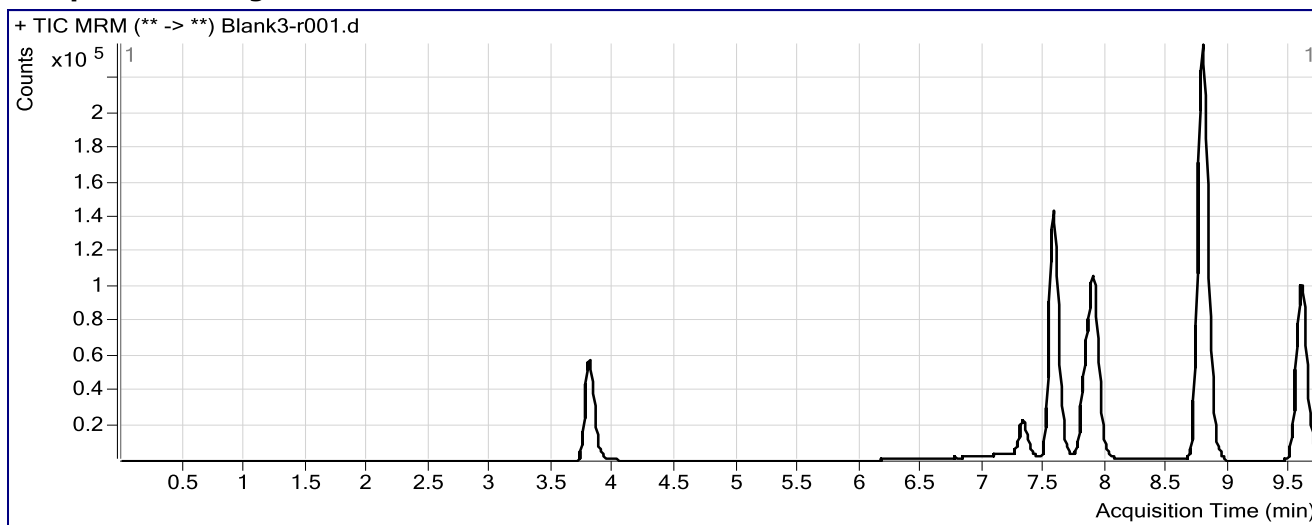
Benzodiazepine Analysis Report

Batch Data Path	C:\MassHunter\Data\BZ\BZ-B-10062015\QuantResults\BZ-B 100715 CS3.batch.bin		
Analysis Time	10/13/2015 8:23 AM	Analyst Name	datastor
Report Time	10/13/2015 8:26 AM	Reporter Name	ISPUser
Last Calib Update	10/13/2015 8:23 AM	Batch State	Processed

Analysis Info

Acq Time	2015-10-06 19:21	Data File	Blank3-r001.d
Sample Type	Blank	Sample Name	Blank
Dilution	1	Acq Method	Benzos_Z_Drugs_ACN_FA_ISP.m
Position	P1-A1	Sample Info	
Inj Vol	-1	Comment	AM 6.1.1 Benzo and Z by LCQQQ

Sample Chromatogram





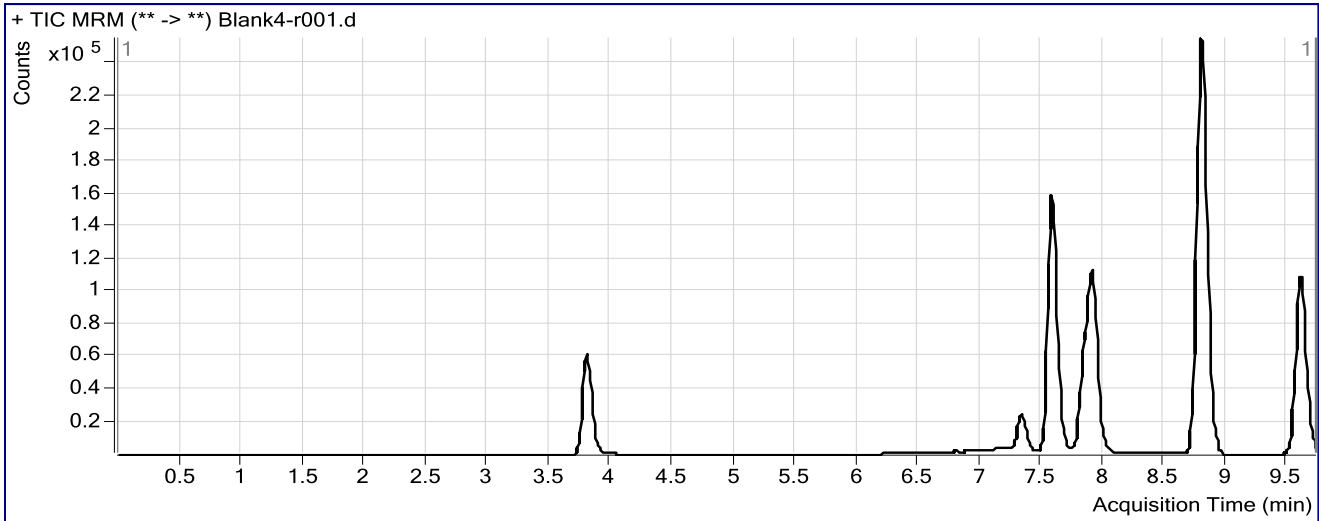
ISP FORENSICS
Pocatello
Benzodiazepine Analysis Report

Batch Data Path	C:\MassHunter\Data\BZ\BZ-B-10062015\QuantResults\BZ-B 100715 CS3.batch.bin		
Analysis Time	10/13/2015 8:23 AM	Analyst Name	datastor
Report Time	10/13/2015 8:26 AM	Reporter Name	ISPUser
Last Calib Update	10/13/2015 8:23 AM	Batch State	Processed

Analysis Info

Acq Time	2015-10-06 19:36	Data File	Blank4-r001.d
Sample Type	Blank	Sample Name	Blank
Dilution	1	Acq Method	Benzos_Z_Drugs_ACN_FA_ISP.m
Position	P1-A1	Sample Info	
Inj Vol	-1	Comment	AM 6.1.1 Benzo and Z by LCQQQ

Sample Chromatogram



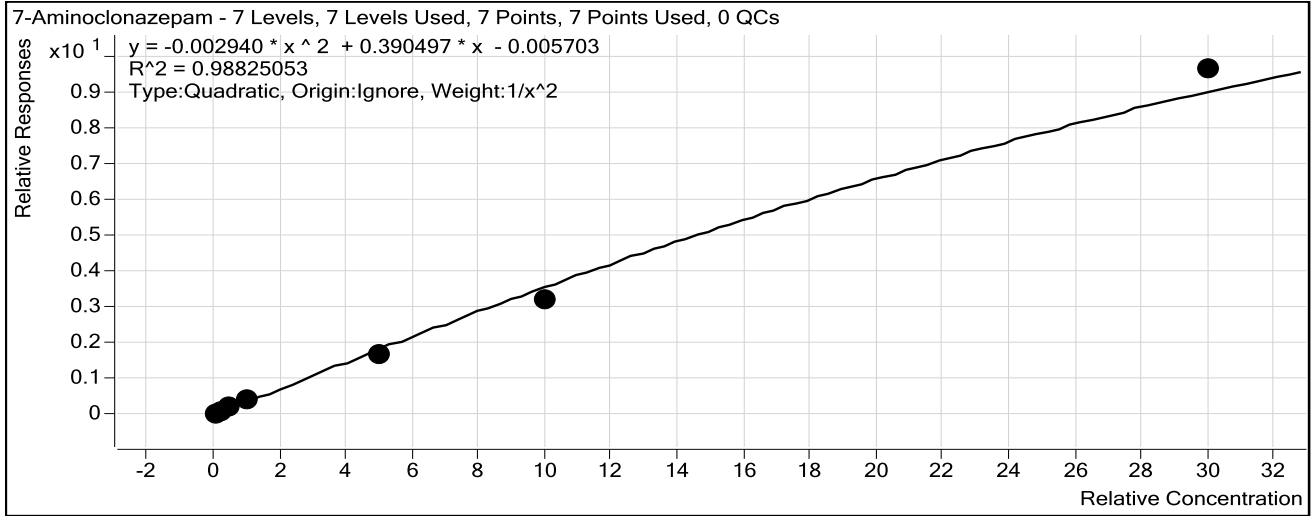
5

ISP Forensics Calibration Curve Report

Batch Data Path C:\MassHunter\Data\BZ\BZ-B-10062015\QuantResults\BZ-B 100715 CS3.batch.bin

Last Calib Update 10/13/2015 8:23 AM **Analyst Name** ISP TOX

Target Compound 7-Aminoclonazepam
Internal Standard 7-Aminoflunitrazepam-D7 ISTD



Sample	Level	Enabled	Exp Conc	Final Conc	Accuracy
10 ng/mL	2	<input checked="" type="checkbox"/>	10	9.7	97.4
25 ng/mL	3	<input checked="" type="checkbox"/>	25	24.8	99.4
50 ng/mL	4	<input checked="" type="checkbox"/>	50	55.9	111.8
100 ng/mL	5	<input checked="" type="checkbox"/>	100	108.3	108.3
500 ng/mL	6	<input checked="" type="checkbox"/>	500	438.0	87.6
1000 ng/mL	7	<input checked="" type="checkbox"/>	1000	885.3	88.5
3000 ng/mL	8	<input checked="" type="checkbox"/>	3000	3269.7	109.0

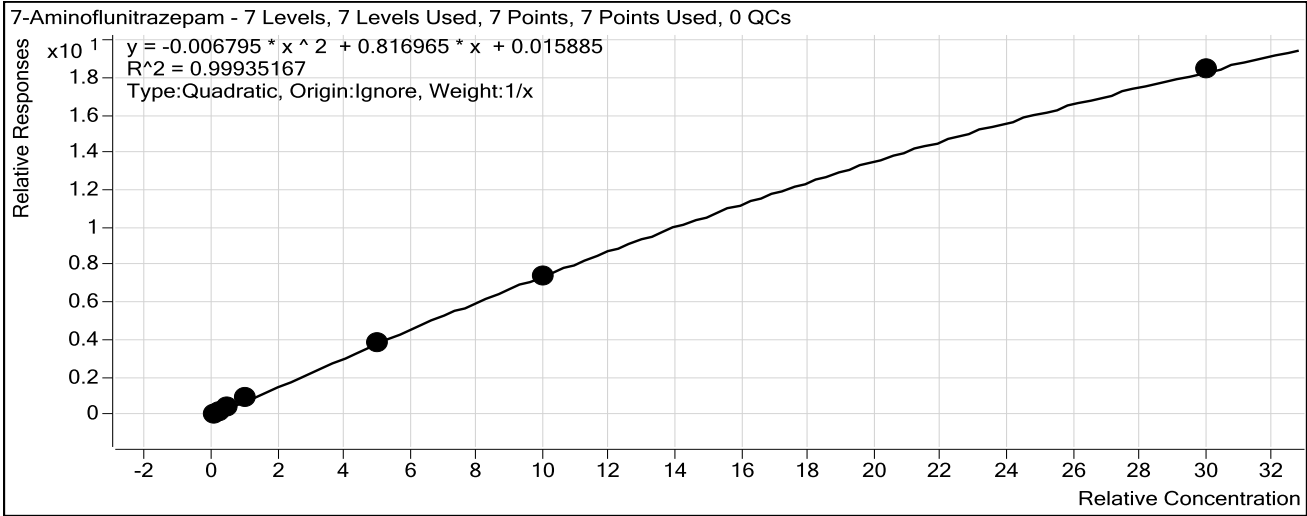
CS

ISP Forensics Calibration Curve Report

Batch Data Path C:\MassHunter\Data\BZ\BZ-B-10062015\QuantResults\BZ-B 100715 CS3.batch.bin

Last Calib Update 10/13/2015 8:23 AM **Analyst Name** ISP TOX

Target Compound 7-Aminoflunitrazepam
Internal Standard 7-Aminoflunitrazepam-D7 ISTD



Sample	Level	Enabled	Exp Conc	Final Conc	Accuracy
10 ng/mL	2	<input checked="" type="checkbox"/>	10	8.8	87.5
25 ng/mL	3	<input checked="" type="checkbox"/>	25	24.0	96.1
50 ng/mL	4	<input checked="" type="checkbox"/>	50	53.9	107.7
100 ng/mL	5	<input checked="" type="checkbox"/>	100	111.2	111.2
500 ng/mL	6	<input checked="" type="checkbox"/>	500	490.9	98.2
1000 ng/mL	7	<input checked="" type="checkbox"/>	1000	990.6	99.1
3000 ng/mL	8	<input checked="" type="checkbox"/>	3000	3007.2	100.2

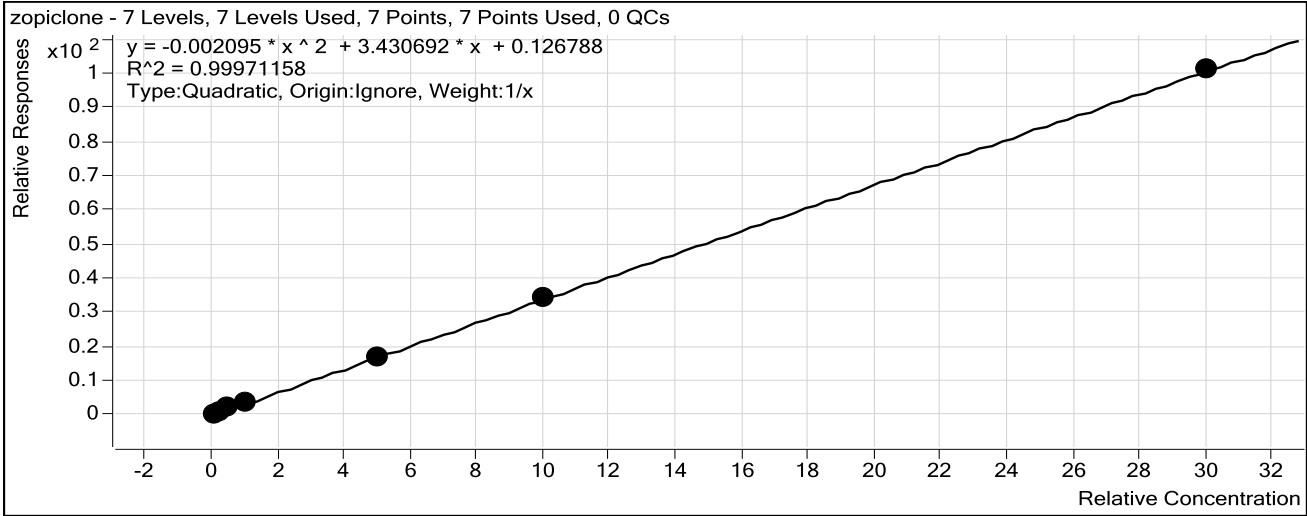
CS

ISP Forensics Calibration Curve Report

Batch Data Path C:\MassHunter\Data\BZ\BZ-B-10062015\QuantResults\BZ-B 100715 CS3.batch.bin

Last Calib Update 10/13/2015 8:23 AM **Analyst Name** ISP TOX

Target Compound *zopiclone*
Internal Standard *Nordiazepam-D5 ISTD*



Sample	Level	Enabled	Exp Conc	Final Conc	Accuracy
10 ng/mL	2	<input checked="" type="checkbox"/>	10	8.7	87.3
25 ng/mL	3	<input checked="" type="checkbox"/>	25	25.3	101.3
50 ng/mL	4	<input checked="" type="checkbox"/>	50	55.4	110.7
100 ng/mL	5	<input checked="" type="checkbox"/>	100	102.8	102.8
500 ng/mL	6	<input checked="" type="checkbox"/>	500	486.2	97.2
1000 ng/mL	7	<input checked="" type="checkbox"/>	1000	1006.8	100.7
3000 ng/mL	8	<input checked="" type="checkbox"/>	3000	2999.9	100.0

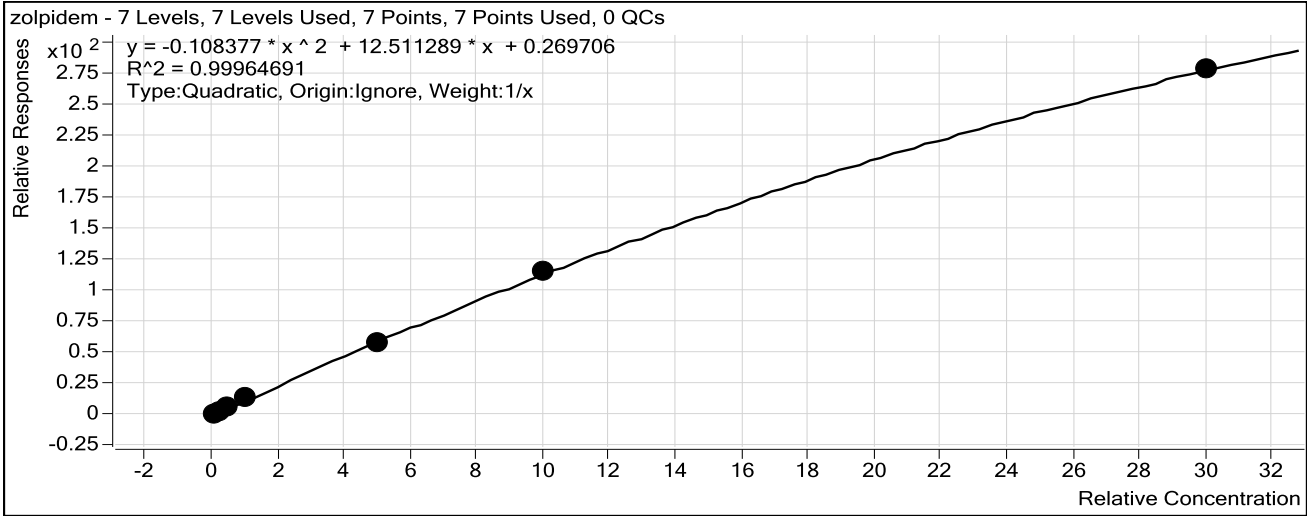
CS

ISP Forensics Calibration Curve Report

Batch Data Path C:\MassHunter\Data\BZ\BZ-B-10062015\QuantResults\BZ-B 100715 CS3.batch.bin

Last Calib Update 10/13/2015 8:23 AM **Analyst Name** ISP TOX

Target Compound zolpidem
Internal Standard Nordiazepam-D5 ISTD



Sample	Level	Enabled	Exp Conc	Final Conc	Accuracy
10 ng/mL	2	<input checked="" type="checkbox"/>	10	9.6	95.8
25 ng/mL	3	<input checked="" type="checkbox"/>	25	24.2	96.6
50 ng/mL	4	<input checked="" type="checkbox"/>	50	52.8	105.7
100 ng/mL	5	<input checked="" type="checkbox"/>	100	104.1	104.1
500 ng/mL	6	<input checked="" type="checkbox"/>	500	482.6	96.5
1000 ng/mL	7	<input checked="" type="checkbox"/>	1000	1014.3	101.4
3000 ng/mL	8	<input checked="" type="checkbox"/>	3000	2997.0	99.9



ISP Forensics Calibration Curve Report

Batch Data Path C:\MassHunter\Data\BZ\BZ-B-10062015\QuantResults\BZ-B 100715 CS3.batch.bin

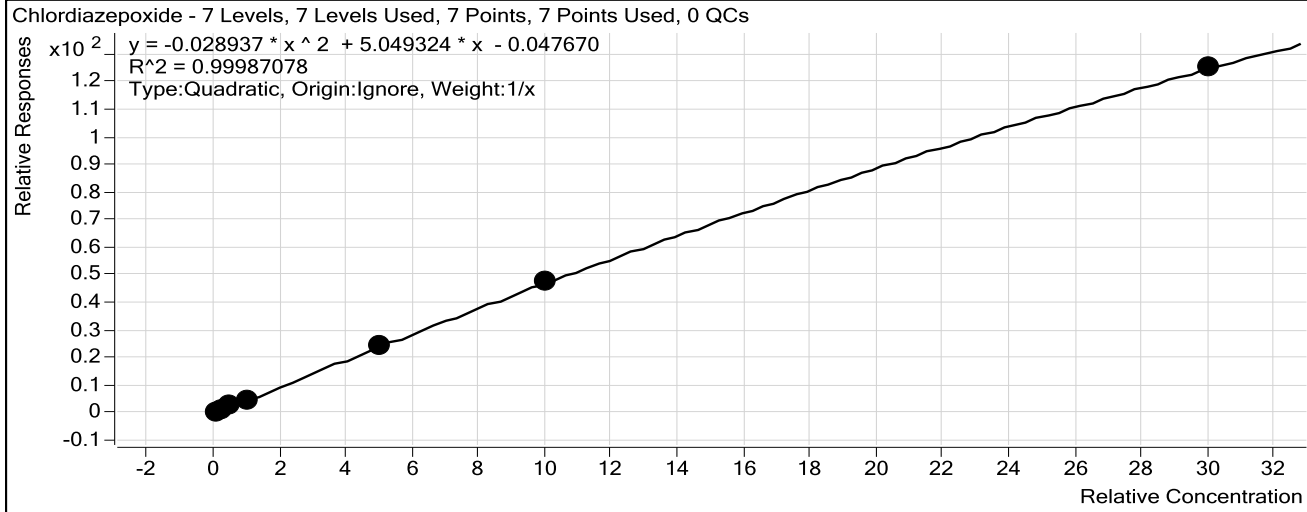
Last Calib Update 10/13/2015 8:23 AM

Analyst Name

ISP TOX

Target Compound *Chlordiazepoxide*

Internal Standard *Nordiazepam-D5 ISTD*



Sample	Level	Enabled	Exp Conc	Final Conc	Accuracy
10 ng/mL	2	<input checked="" type="checkbox"/>	10	11.1	110.9
25 ng/mL	3	<input checked="" type="checkbox"/>	25	23.5	94.2
50 ng/mL	4	<input checked="" type="checkbox"/>	50	49.0	98.0
100 ng/mL	5	<input checked="" type="checkbox"/>	100	96.4	96.4
500 ng/mL	6	<input checked="" type="checkbox"/>	500	498.6	99.7
1000 ng/mL	7	<input checked="" type="checkbox"/>	1000	1009.9	101.0
3000 ng/mL	8	<input checked="" type="checkbox"/>	3000	2996.1	99.9

ISP Forensics Calibration Curve Report



Batch Data Path C:\MassHunter\Data\BZ\BZ-B-10062015\QuantResults\BZ-B 100715 CS3.batch.bin

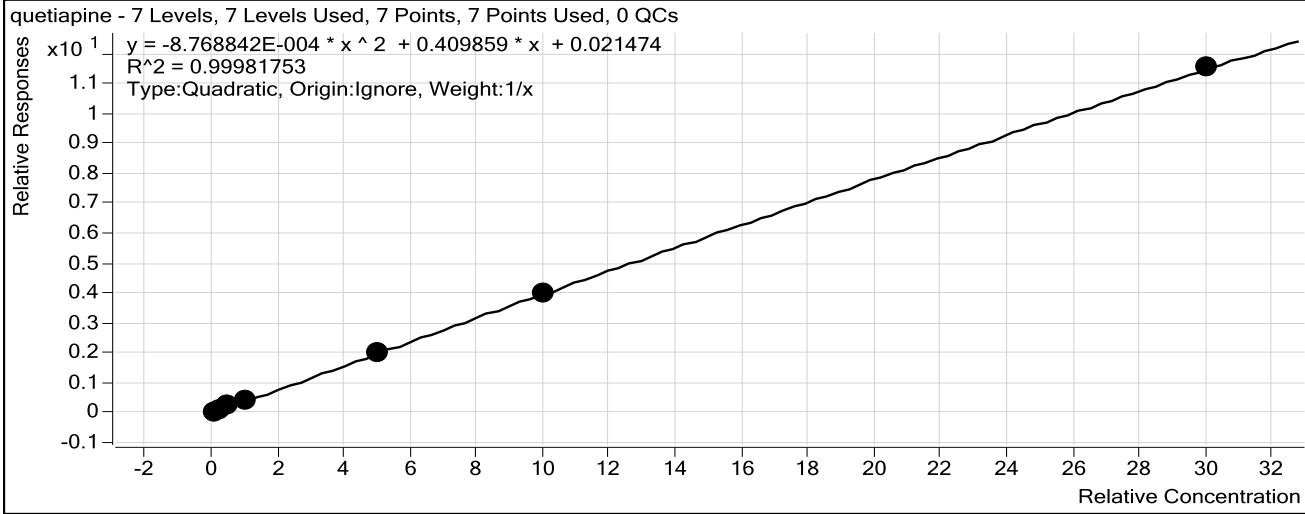
Last Calib Update 10/13/2015 8:23 AM

Analyst Name

ISP TOX

Target Compound *quetiapine*

Internal Standard *Temazepam-D5 ISTD*



Sample	Level	Enabled	Exp Conc	Final Conc	Accuracy
10 ng/mL	2	<input checked="" type="checkbox"/>	10	9.1	90.8
25 ng/mL	3	<input checked="" type="checkbox"/>	25	24.5	98.1
50 ng/mL	4	<input checked="" type="checkbox"/>	50	55.4	110.9
100 ng/mL	5	<input checked="" type="checkbox"/>	100	101.2	101.2
500 ng/mL	6	<input checked="" type="checkbox"/>	500	497.6	99.5
1000 ng/mL	7	<input checked="" type="checkbox"/>	1000	995.2	99.5
3000 ng/mL	8	<input checked="" type="checkbox"/>	3000	3002.1	100.1

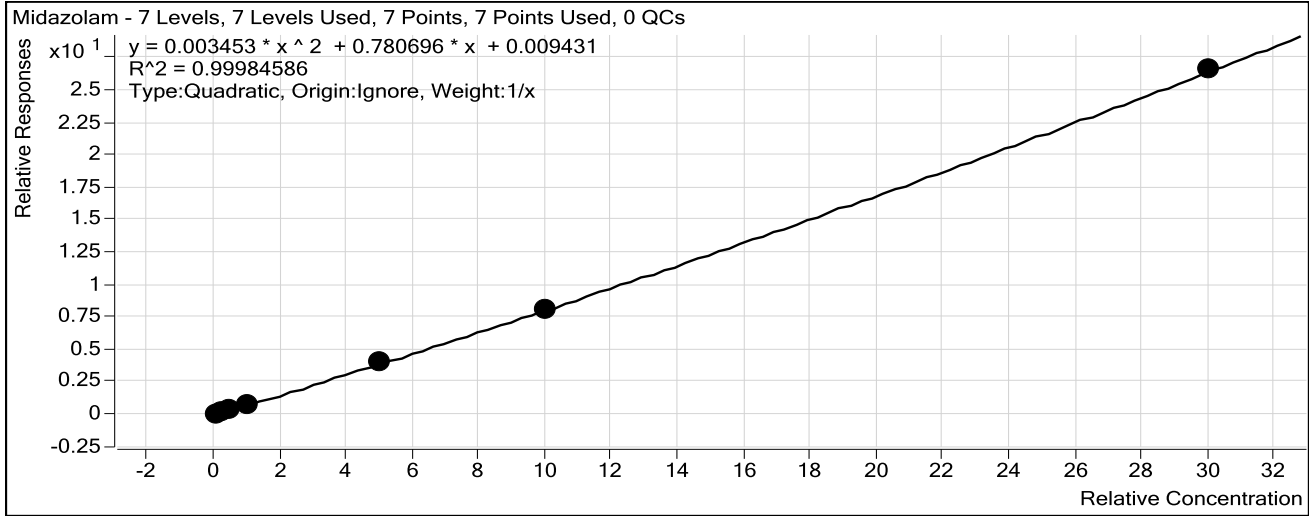
3

ISP Forensics Calibration Curve Report

Batch Data Path C:\MassHunter\Data\BZ\BZ-B-10062015\QuantResults\BZ-B 100715 CS3.batch.bin

Last Calib Update 10/13/2015 8:23 AM **Analyst Name** ISP TOX

Target Compound Midazolam
Internal Standard Clonazepam-D4 ISTD



Sample	Level	Enabled	Exp Conc	Final Conc	Accuracy
10 ng/mL	2	<input checked="" type="checkbox"/>	10	10.0	99.5
25 ng/mL	3	<input checked="" type="checkbox"/>	25	23.9	95.5
50 ng/mL	4	<input checked="" type="checkbox"/>	50	51.8	103.6
100 ng/mL	5	<input checked="" type="checkbox"/>	100	100.4	100.4
500 ng/mL	6	<input checked="" type="checkbox"/>	500	512.9	102.6
1000 ng/mL	7	<input checked="" type="checkbox"/>	1000	983.1	98.3
3000 ng/mL	8	<input checked="" type="checkbox"/>	3000	3003.0	100.1



ISP Forensics Calibration Curve Report

Batch Data Path C:\MassHunter\Data\BZ\BZ-B-10062015\QuantResults\BZ-B 100715 CS3.batch.bin

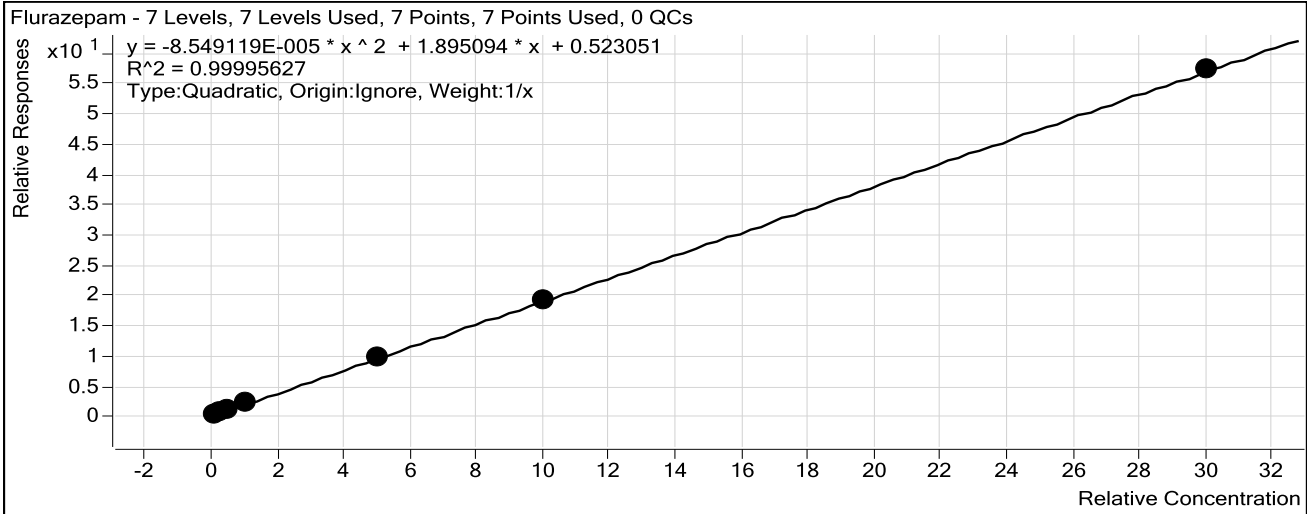
Last Calib Update 10/13/2015 8:23 AM

Analyst Name

ISP TOX

Target Compound *Flurazepam*

Internal Standard *Diazepam-D5 ISTD*



Sample	Level	Enabled	Exp Conc	Final Conc	Accuracy
10 ng/mL	2	<input checked="" type="checkbox"/>	10	10.5	105.3
25 ng/mL	3	<input checked="" type="checkbox"/>	25	23.4	93.5
50 ng/mL	4	<input checked="" type="checkbox"/>	50	49.8	99.7
100 ng/mL	5	<input checked="" type="checkbox"/>	100	101.2	101.2
500 ng/mL	6	<input checked="" type="checkbox"/>	500	503.5	100.7
1000 ng/mL	7	<input checked="" type="checkbox"/>	1000	995.8	99.6
3000 ng/mL	8	<input checked="" type="checkbox"/>	3000	3000.8	100.0

3

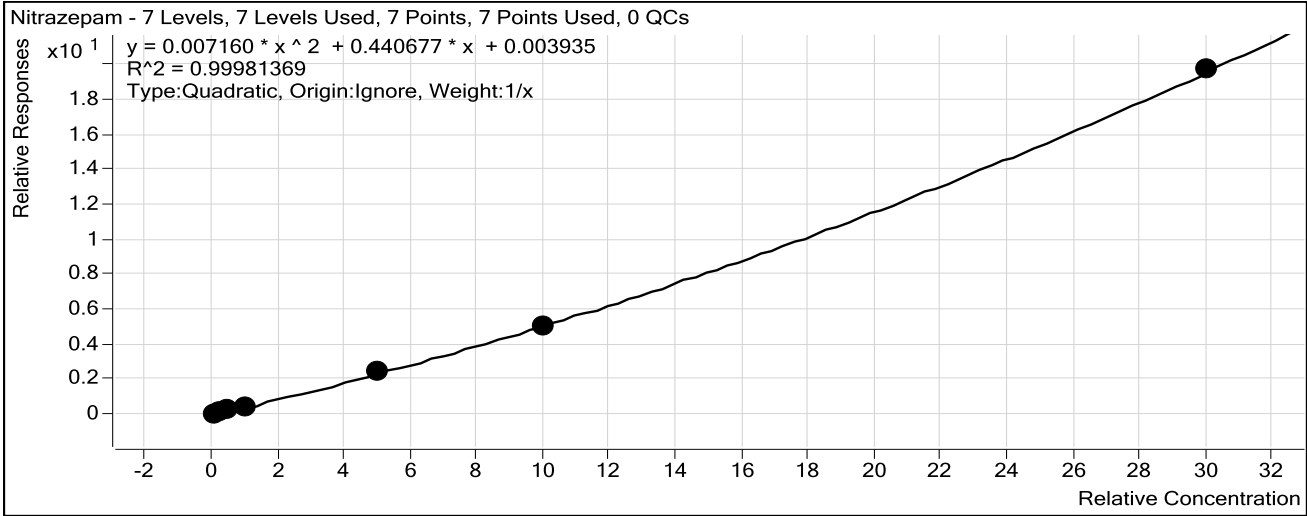
ISP Forensics Calibration Curve Report

Batch Data Path C:\MassHunter\Data\BZ\BZ-B-10062015\QuantResults\BZ-B 100715 CS3.batch.bin

Last Calib Update 10/13/2015 8:23 AM

Analyst Name ISP TOX

Target Compound Nitrazepam
Internal Standard Clonazepam-D4 ISTD



Sample	Level	Enabled	Exp Conc	Final Conc	Accuracy
10 ng/mL	2	<input checked="" type="checkbox"/>	10	9.8	98.0
25 ng/mL	3	<input checked="" type="checkbox"/>	25	23.6	94.6
50 ng/mL	4	<input checked="" type="checkbox"/>	50	51.6	103.1
100 ng/mL	5	<input checked="" type="checkbox"/>	100	103.2	103.2
500 ng/mL	6	<input checked="" type="checkbox"/>	500	515.0	103.0
1000 ng/mL	7	<input checked="" type="checkbox"/>	1000	979.9	98.0
3000 ng/mL	8	<input checked="" type="checkbox"/>	3000	3003.0	100.1

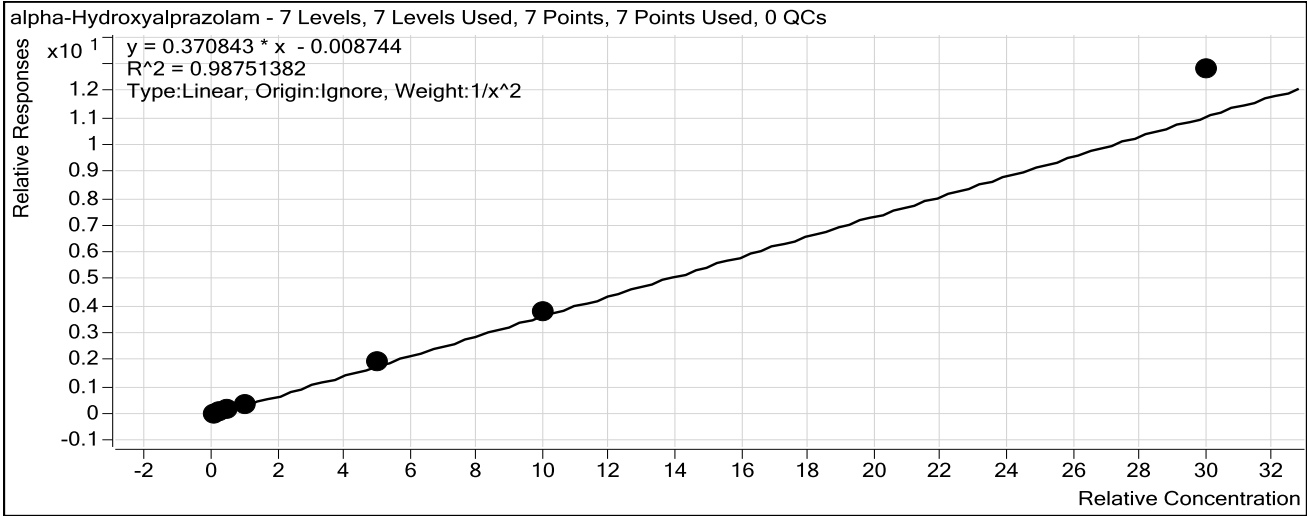
CS

ISP Forensics Calibration Curve Report

Batch Data Path C:\MassHunter\Data\BZ\BZ-B-10062015\QuantResults\BZ-B 100715 CS3.batch.bin

Last Calib Update 10/13/2015 8:23 AM **Analyst Name** ISP TOX

Target Compound *alpha-Hydroxyalprazolam*
Internal Standard *alphahydroxyalprazolam-D5 ISTD*



Sample	Level	Enabled	Exp Conc	Final Conc	Accuracy
10 ng/mL	2	<input checked="" type="checkbox"/>	10	10.5	105.1
25 ng/mL	3	<input checked="" type="checkbox"/>	25	23.9	95.7
50 ng/mL	4	<input checked="" type="checkbox"/>	50	43.9	87.8
100 ng/mL	5	<input checked="" type="checkbox"/>	100	88.9	88.9
500 ng/mL	6	<input checked="" type="checkbox"/>	500	520.8	104.2
1000 ng/mL	7	<input checked="" type="checkbox"/>	1000	1033.3	103.3
3000 ng/mL	8	<input checked="" type="checkbox"/>	3000	3450.6	115.0



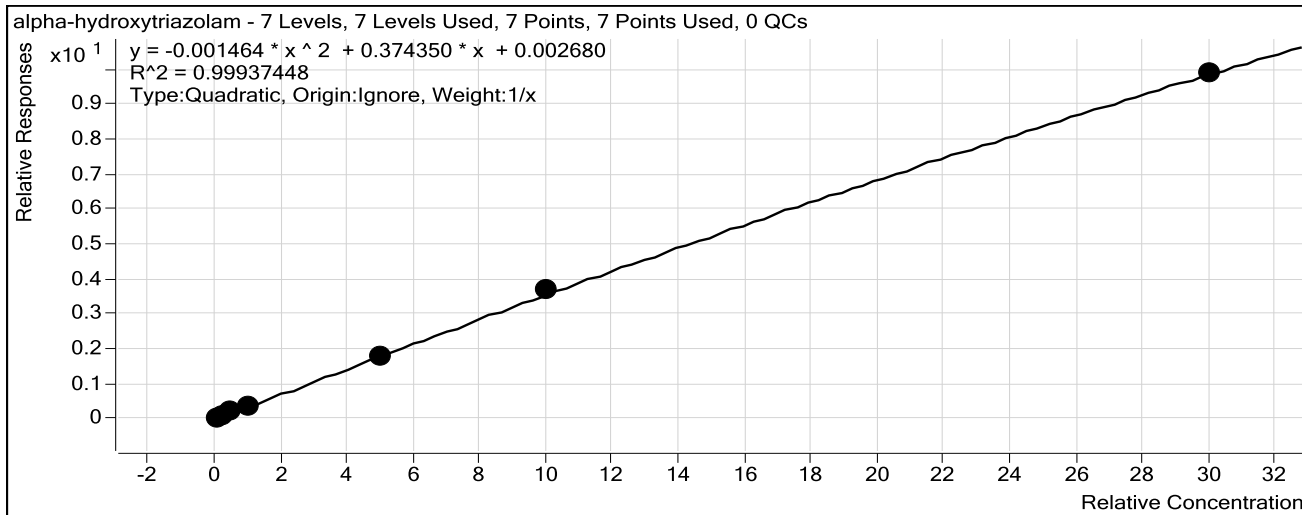
ISP Forensics Calibration Curve Report

Batch Data Path C:\MassHunter\Data\BZ\BZ-B-10062015\QuantResults\BZ-B 100715 CS3.batch.bin

Last Calib Update 10/13/2015 8:23 AM **Analyst Name** ISP TOX

Target Compound *alpha-hydroxytriazolam*

Internal Standard *Nordiazepam-D5 ISTD*



Sample	Level	Enabled	Exp Conc	Final Conc	Accuracy
10 ng/mL	2	<input checked="" type="checkbox"/>	10	11.1	111.3
25 ng/mL	3	<input checked="" type="checkbox"/>	25	24.1	96.2
50 ng/mL	4	<input checked="" type="checkbox"/>	50	50.0	100.0
100 ng/mL	5	<input checked="" type="checkbox"/>	100	93.1	93.1
500 ng/mL	6	<input checked="" type="checkbox"/>	500	481.6	96.3
1000 ng/mL	7	<input checked="" type="checkbox"/>	1000	1034.6	103.5
3000 ng/mL	8	<input checked="" type="checkbox"/>	3000	2990.3	99.7

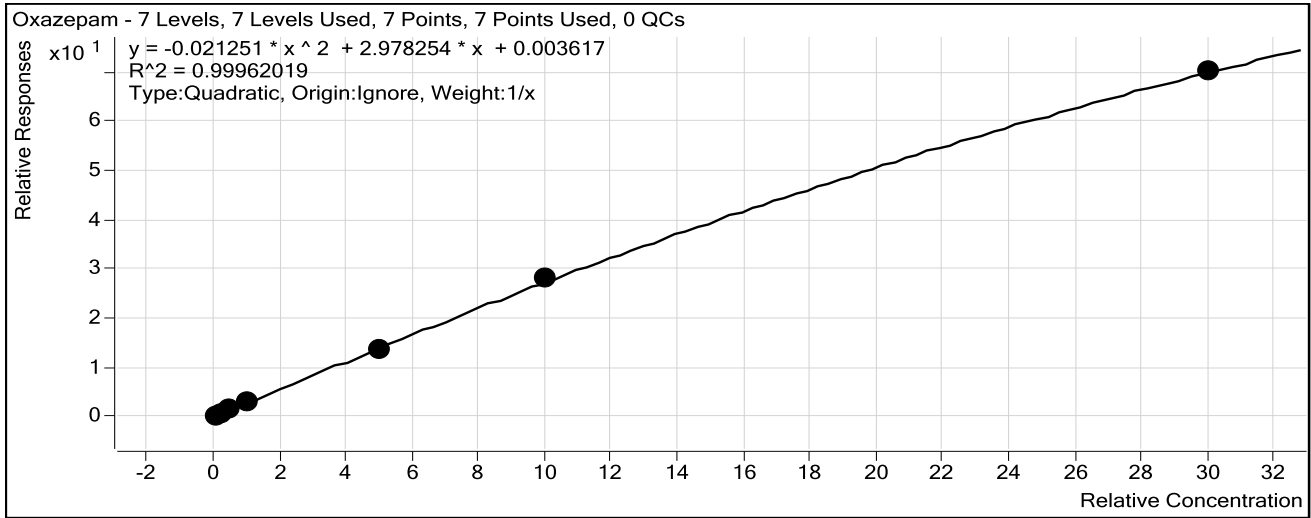


ISP Forensics Calibration Curve Report

Batch Data Path C:\MassHunter\Data\BZ\BZ-B-10062015\QuantResults\BZ-B 100715 CS3.batch.bin

Last Calib Update 10/13/2015 8:23 AM **Analyst Name** ISP TOX

Target Compound Oxazepam
Internal Standard Nordiazepam-D5 ISTD



Sample	Level	Enabled	Exp Conc	Final Conc	Accuracy
10 ngmL	2	<input checked="" type="checkbox"/>	10	10.7	106.7
25 ngmL	3	<input checked="" type="checkbox"/>	25	23.8	95.3
50 ngmL	4	<input checked="" type="checkbox"/>	50	49.5	99.0
100 ngmL	5	<input checked="" type="checkbox"/>	100	100.3	100.3
500 ngmL	6	<input checked="" type="checkbox"/>	500	481.8	96.4
1000 ngmL	7	<input checked="" type="checkbox"/>	1000	1026.0	102.6
3000 ngmL	8	<input checked="" type="checkbox"/>	3000	2992.0	99.7

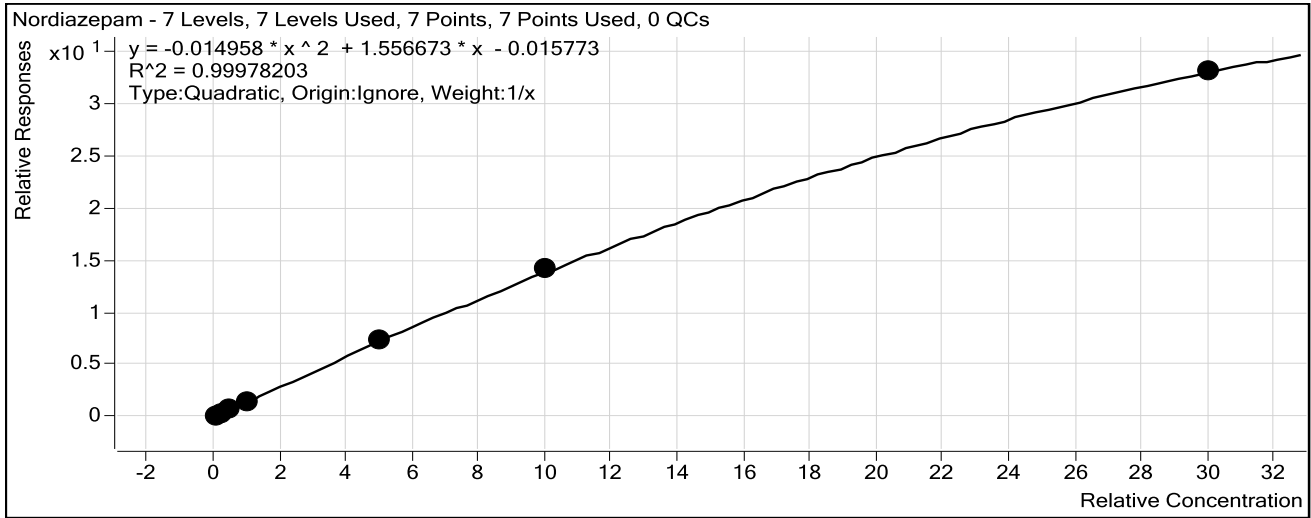


ISP Forensics Calibration Curve Report

Batch Data Path C:\MassHunter\Data\BZ\BZ-B-10062015\QuantResults\BZ-B 100715 CS3.batch.bin

Last Calib Update 10/13/2015 8:23 AM **Analyst Name** ISP TOX

Target Compound Nordiazepam
Internal Standard Nordiazepam-D5 ISTD



Sample	Level	Enabled	Exp Conc	Final Conc	Accuracy
10 ngmL	2	<input checked="" type="checkbox"/>	10	11.0	109.9
25 ngmL	3	<input checked="" type="checkbox"/>	25	24.3	97.2
50 ngmL	4	<input checked="" type="checkbox"/>	50	48.6	97.1
100 ngmL	5	<input checked="" type="checkbox"/>	100	95.3	95.3
500 ngmL	6	<input checked="" type="checkbox"/>	500	495.4	99.1
1000 ngmL	7	<input checked="" type="checkbox"/>	1000	1016.8	101.7
3000 ngmL	8	<input checked="" type="checkbox"/>	3000	2991.4	99.7

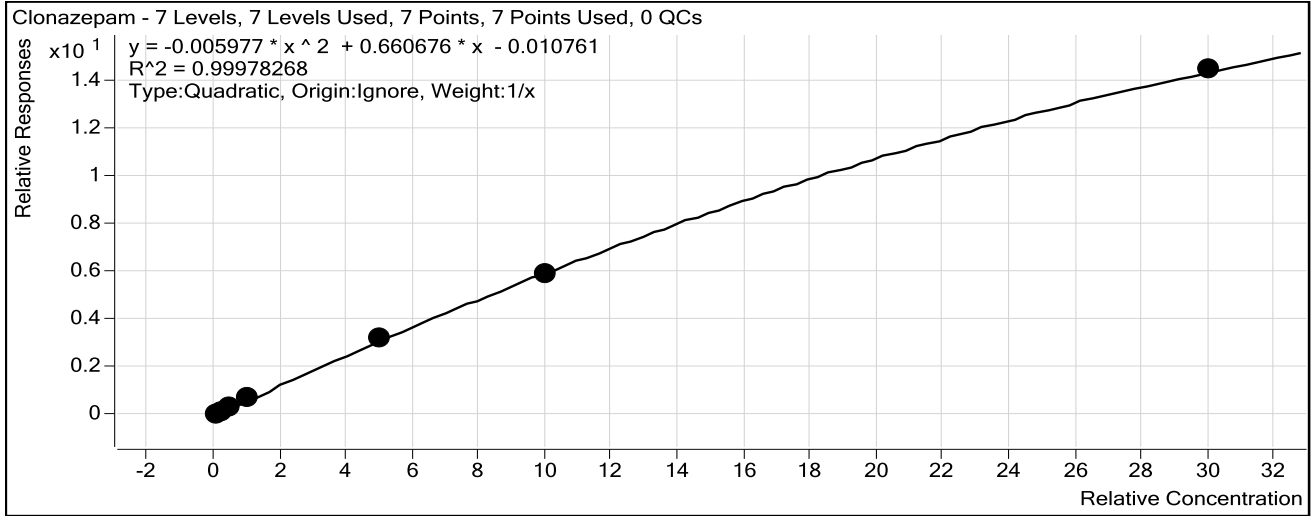
5

ISP Forensics Calibration Curve Report

Batch Data Path C:\MassHunter\Data\BZ\BZ-B-10062015\QuantResults\BZ-B 100715 CS3.batch.bin

Last Calib Update 10/13/2015 8:23 AM **Analyst Name** ISP TOX

Target Compound *Clonazepam*
Internal Standard *Clonazepam-D4 ISTD*



Sample	Level	Enabled	Exp Conc	Final Conc	Accuracy
10 ng/mL	2	<input checked="" type="checkbox"/>	10	10.3	103.2
25 ng/mL	3	<input checked="" type="checkbox"/>	25	22.7	90.8
50 ng/mL	4	<input checked="" type="checkbox"/>	50	50.6	101.1
100 ng/mL	5	<input checked="" type="checkbox"/>	100	105.1	105.1
500 ng/mL	6	<input checked="" type="checkbox"/>	500	504.1	100.8
1000 ng/mL	7	<input checked="" type="checkbox"/>	1000	988.0	98.8
3000 ng/mL	8	<input checked="" type="checkbox"/>	3000	3005.5	100.2

ISP Forensics Calibration Curve Report

5

Batch Data Path C:\MassHunter\Data\BZ\BZ-B-10062015\QuantResults\BZ-B 100715 CS3.batch.bin

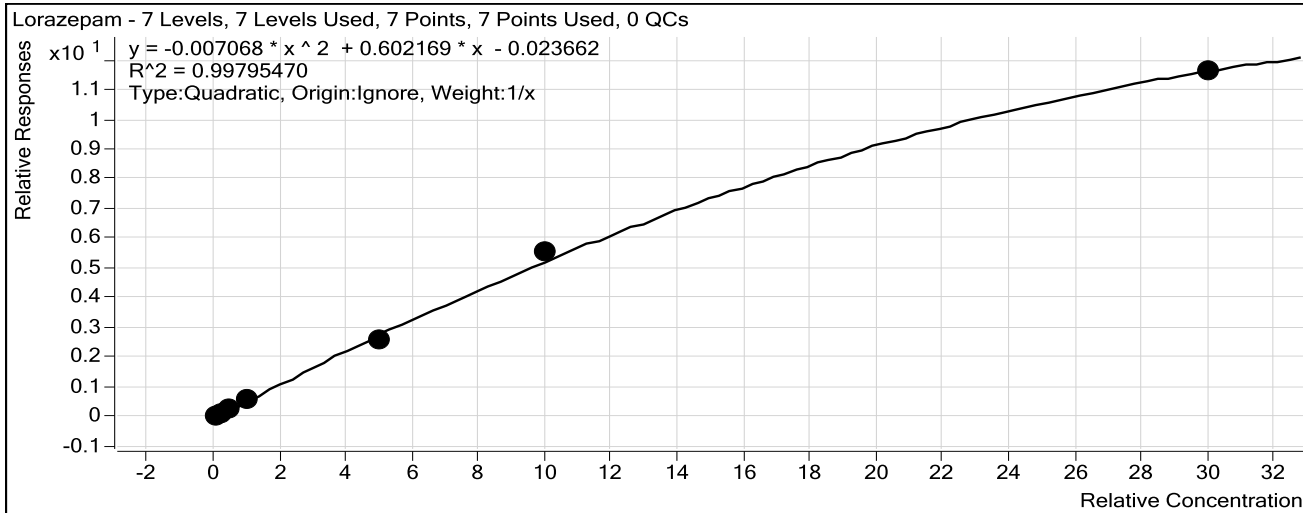
Last Calib Update 10/13/2015 8:23 AM

Analyst Name

ISP TOX

Target Compound Lorazepam

Internal Standard Nordiazepam-D5 ISTD



Sample	Level	Enabled	Exp Conc	Final Conc	Accuracy
10 ng/mL	2	<input checked="" type="checkbox"/>	10	11.7	117.1
25 ng/mL	3	<input checked="" type="checkbox"/>	25	23.6	94.5
50 ng/mL	4	<input checked="" type="checkbox"/>	50	46.2	92.5
100 ng/mL	5	<input checked="" type="checkbox"/>	100	97.7	97.7
500 ng/mL	6	<input checked="" type="checkbox"/>	500	464.6	92.9
1000 ng/mL	7	<input checked="" type="checkbox"/>	1000	1062.7	106.3
3000 ng/mL	8	<input checked="" type="checkbox"/>	3000	2965.1	98.8



ISP Forensics Calibration Curve Report

Batch Data Path C:\MassHunter\Data\BZ\BZ-B-10062015\QuantResults\BZ-B 100715 CS3.batch.bin

Last Calib Update 10/13/2015 8:23 AM

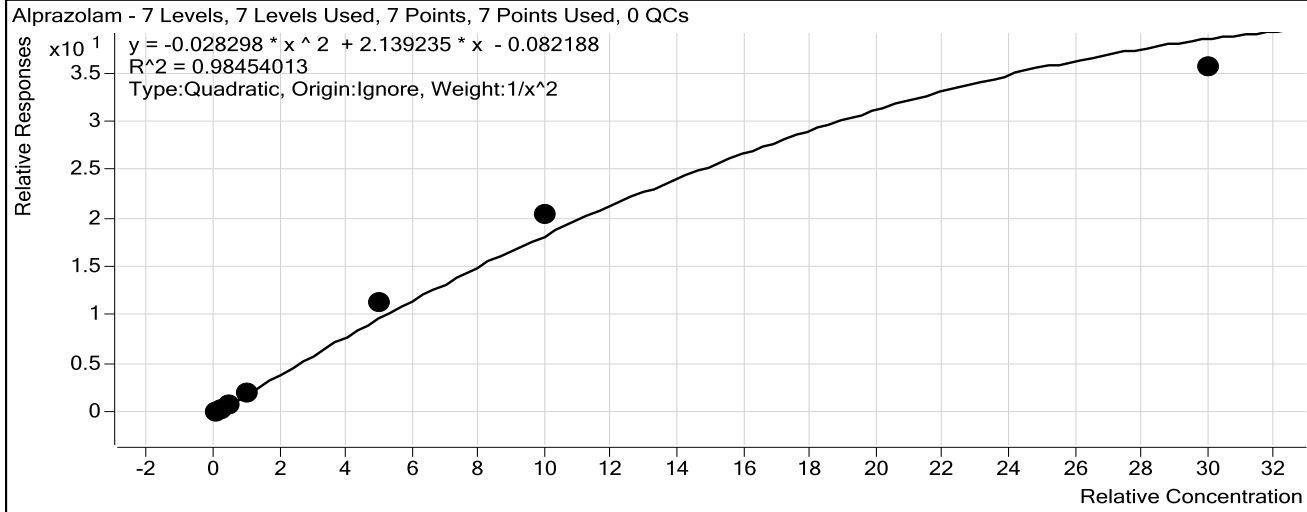
Analyst Name

ISP TOX

Target Compound Alprazolam

Internal Standard

alphahydroxyalprazolam-D5 ISTD



Sample	Level	Enabled	Exp Conc	Final Conc	Accuracy
10 ng/mL	2	<input checked="" type="checkbox"/>	10	10.6	106.2
25 ng/mL	3	<input checked="" type="checkbox"/>	25	22.5	89.8
50 ng/mL	4	<input checked="" type="checkbox"/>	50	44.0	87.9
100 ng/mL	5	<input checked="" type="checkbox"/>	100	99.0	99.0
500 ng/mL	6	<input checked="" type="checkbox"/>	500	573.2	114.6
1000 ng/mL	7	<input checked="" type="checkbox"/>	1000	1125.9	112.6
3000 ng/mL	8	<input checked="" type="checkbox"/>	3000	2475.8	82.5

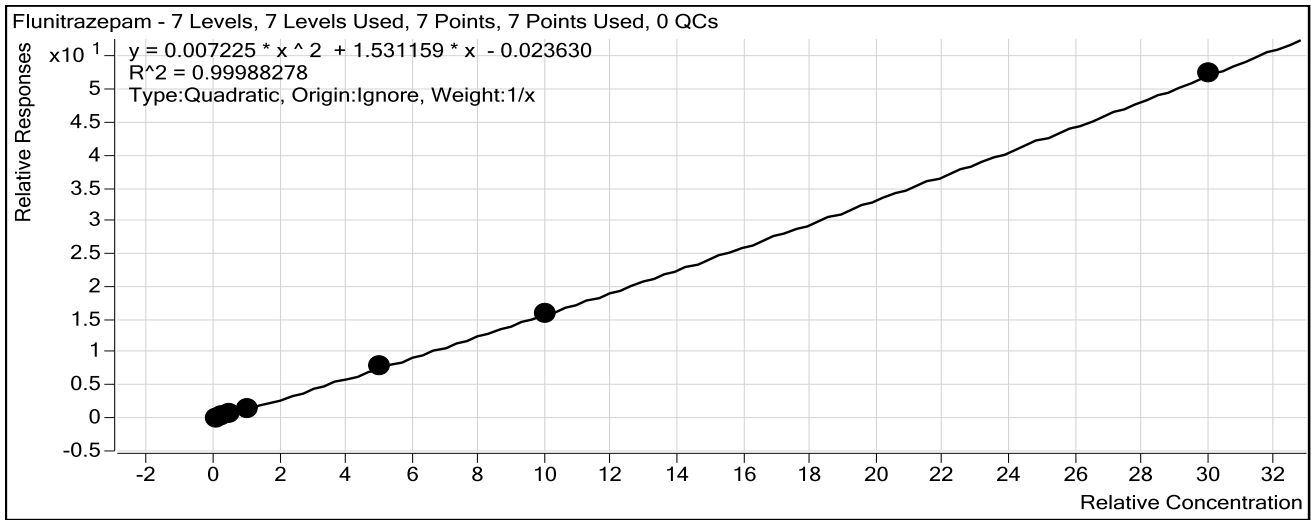


ISP Forensics Calibration Curve Report

Batch Data Path C:\MassHunter\Data\BZ\BZ-B-10062015\QuantResults\BZ-B 100715 CS3.batch.bin

Last Calib Update 10/13/2015 8:23 AM **Analyst Name** ISP TOX

Target Compound *Flunitrazepam*
Internal Standard *Clonazepam-D4 ISTD*



Sample	Level	Enabled	Exp Conc	Final Conc	Accuracy
10 ng/mL	2	<input checked="" type="checkbox"/>	10	10.6	105.8
25 ng/mL	3	<input checked="" type="checkbox"/>	25	22.8	91.1
50 ng/mL	4	<input checked="" type="checkbox"/>	50	50.7	101.4
100 ng/mL	5	<input checked="" type="checkbox"/>	100	100.9	100.9
500 ng/mL	6	<input checked="" type="checkbox"/>	500	509.9	102.0
1000 ng/mL	7	<input checked="" type="checkbox"/>	1000	988.2	98.8
3000 ng/mL	8	<input checked="" type="checkbox"/>	3000	3002.0	100.1



ISP Forensics Calibration Curve Report

Batch Data Path C:\MassHunter\Data\BZ\BZ-B-10062015\QuantResults\BZ-B 100715 CS3.batch.bin

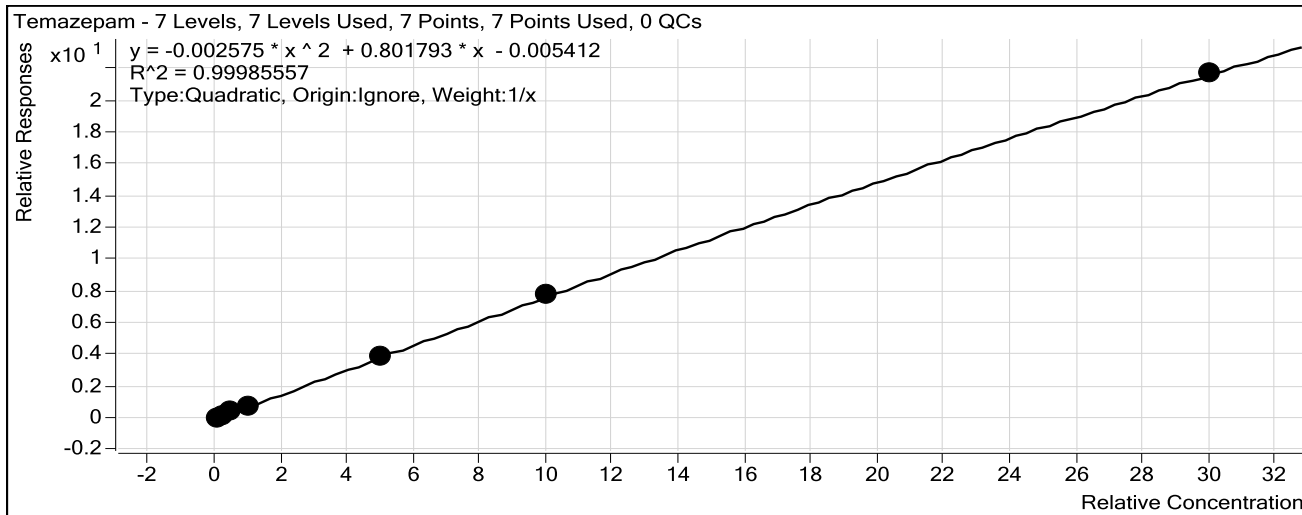
Last Calib Update 10/13/2015 8:23 AM

Analyst Name

ISP TOX

Target Compound *Temazepam*

Internal Standard *Temazepam-D5 ISTD*



Sample	Level	Enabled	Exp Conc	Final Conc	Accuracy
10 ng/mL	2	<input checked="" type="checkbox"/>	10	10.9	108.9
25 ng/mL	3	<input checked="" type="checkbox"/>	25	22.8	91.0
50 ng/mL	4	<input checked="" type="checkbox"/>	50	50.4	100.7
100 ng/mL	5	<input checked="" type="checkbox"/>	100	99.9	99.9
500 ng/mL	6	<input checked="" type="checkbox"/>	500	491.8	98.4
1000 ng/mL	7	<input checked="" type="checkbox"/>	1000	1012.4	101.2
3000 ng/mL	8	<input checked="" type="checkbox"/>	3000	2996.9	99.9



ISP Forensics Calibration Curve Report

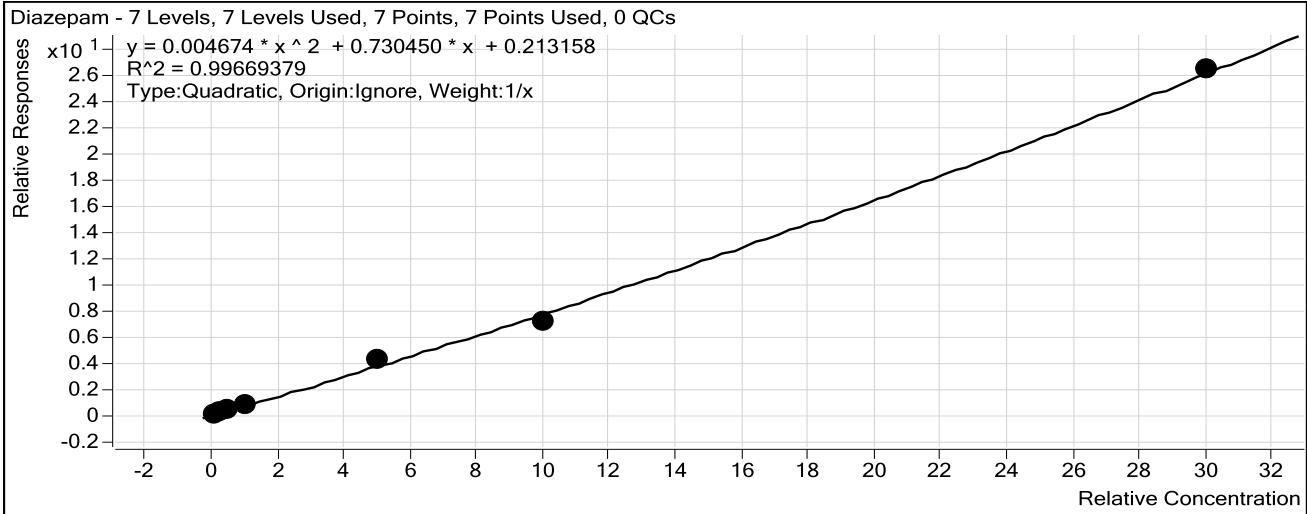
Batch Data Path C:\MassHunter\Data\BZ\BZ-B-10062015\QuantResults\BZ-B 100715 CS3.batch.bin

Last Calib Update 10/13/2015 8:23 AM

Analyst Name ISP TOX

Target Compound *Diazepam*

Internal Standard *Diazepam-D5 ISTD*



Sample	Level	Enabled	Exp Conc	Final Conc	Accuracy
10 ng/mL	2	<input checked="" type="checkbox"/>	10	9.4	93.8
25 ng/mL	3	<input checked="" type="checkbox"/>	25	21.1	84.2
50 ng/mL	4	<input checked="" type="checkbox"/>	50	55.9	111.9
100 ng/mL	5	<input checked="" type="checkbox"/>	100	105.3	105.3
500 ng/mL	6	<input checked="" type="checkbox"/>	500	562.2	112.4
1000 ng/mL	7	<input checked="" type="checkbox"/>	1000	917.3	91.7
3000 ng/mL	8	<input checked="" type="checkbox"/>	3000	3014.2	100.5